

Florida Keys National Marine Sanctuary Revised Management Plan



December 2007

U.S. Department of Commerce

National Oceanic and
Atmospheric Administration

National Ocean Service

National Marine Sanctuary Program

This document is the revised management plan for the Florida Keys National Marine Sanctuary. It replaces the management plan that was implemented in 1996 and will serve as the primary management document for the Sanctuary during the next five years.

Comments or questions on this management plan should be directed to:

CDR David A. Score
Superintendent
Florida Keys National Marine Sanctuary
33 East Quay Road
Key West, Florida 33040
(305) 809-4700
David.A.Score@noaa.gov

Note to Reader

In an effort to make this document more user-friendly, we have included references to the Florida Keys National Marine Sanctuary Web site rather than including the entire text of many bulky attachments or appendices that are traditionally included in management plans. Readers who do not have access to the Internet may call the Sanctuary office at (305) 809-4700 to request copies of any documents that are on the Sanctuary's Web site. For readers with Internet access, the Sanctuary's Web site can be found at floridakeys.noaa.gov.

ABOUT THIS DOCUMENT

This document is a report on the results of NOAA's five-year review of the strategies and activities detailed in the 1996 *Final Management Plan and Environmental Impact Statement* for the Florida Keys National Marine Sanctuary. It serves two primary purposes: 1) to update readers on the outcomes of successfully implemented strategies - in short, accomplishments that were merely plans on paper in 1996; and, 2) to disseminate useful information about the Sanctuary and its management strategies, activities and products. The hope is that this information, which charts the next 5 years of Sanctuary management, will enhance the communication and cooperation so vital to protecting important national resources.

Sanctuary Characteristics

The Florida Keys National Marine Sanctuary extends approximately 220 nautical miles southwest from the southern tip of the Florida peninsula. The Sanctuary's marine ecosystem supports over 6,000 species of plants, fishes, and invertebrates, including the nation's only living coral reef that lies adjacent to the continent. The area includes one of the largest seagrass communities in this hemisphere. Attracted by this tropical diversity, tourists spend more than thirteen million visitor days in the Florida Keys each year. In addition, the region's natural and man-made resources provide recreation and livelihoods for approximately 80,000 residents.

The Sanctuary is 2,900 square nautical miles of coastal waters, including the 2001 addition of the Tortugas Ecological Reserve. The Sanctuary overlaps four national wildlife refuges, six state parks, three state aquatic preserves and has incorporated two of the earliest national marine sanctuaries to be designated, Key Largo and Looe Key National Marine Sanctuaries. Three national parks have separate jurisdictions, and share a boundary with the Sanctuary. The region also has some of the most significant maritime heritage and historical resources of any coastal community in the nation.

The Sanctuary faces specific threats, including direct human impacts such as vessel groundings, pollution, and overfishing. Threats to the Sanctuary also include indirect human impacts, which are harder to identify but are reflected in coral declines and increases in macroalgae and turbidity. More information about the Sanctuary can be found in this document and at the Sanctuary's Web site.

Management Plan Organization

Within this document, the tools that the Sanctuary uses to achieve its goals are presented in five management divisions: 1) Science; 2) Education, Outreach & Stewardship; 3) Enforcement & Resource Protection; 4) Resource Threat Reduction; and 5) Administration, Community Relations, & Policy Coordination. Each management division contains two or more *action plans*, which are implemented through supporting *strategies* and *activities*. The strategies described in the 1996 *Management Plan* generally retain their designations in this document. As in the 1996 plan, two or more action plans may share a strategy where their goals and aims converge. The 1996 plan can be accessed on the Sanctuary's Web site floridakeys.noaa.gov

Accomplishments and Highlights

The Sanctuary's programs and projects have made significant progress since the original management plan was implemented 1996. An overview of these accomplishments is provided in the Introduction. In addition, each action plan contains bulleted lists of accomplishments since the 1996 management plan was adopted.

Table of Contents

| | |
|--|-----------|
| ABOUT THIS DOCUMENT | i |
| TABLE OF CONTENTS | iii |
| ACRONYMS | vii |
| 1.0 INTRODUCTION..... | 1 |
| 1.1 THE NATIONAL MARINE SANCTUARY PROGRAM (NMSP)..... | 1 |
| 1.2 THE FLORIDA KEYS NATIONAL MARINE SANCTUARY (FKNMS) | 2 |
| 1.3 THE MANAGEMENT PLAN REVIEW PROCESS..... | 6 |
| 1.4 ACCOMPLISHMENTS | 9 |
| 2.0 THE SANCTUARY ENVIRONMENT: A SUBTROPICAL ECOSYSTEM..... | 13 |
| 2.1 INTRODUCTION..... | 13 |
| 2.2 LIVING MARINE RESOURCES..... | 13 |
| 2.3 NON-LIVING MARINE RESOURCES..... | 16 |
| 2.4 THREATS TO THE ECOSYSTEM..... | 17 |
| 3.0 ACTION PLANS..... | 19 |
| WHAT ARE THE ACTION PLANS IN THIS DOCUMENT?..... | 19 |
| IMPLEMENTING ACTION PLANS..... | 27 |
| ACTION PLAN IMPLEMENTATION COSTS..... | 30 |
| 3.1 SANCTUARY SCIENCE..... | 31 |
| 3.1.1 SCIENCE MANAGEMENT & ADMINISTRATION ACTION PLAN | 32 |
| <i>Strategy B.11 Issuance of Sanctuary Research Permits.....</i> | 35 |
| <i>Strategy W.29 Dissemination of Findings.....</i> | 35 |
| <i>Strategy W.32 Maintaining a Technical Advisory Committee</i> | 37 |
| <i>Strategy W.34 Regional Science Partnerships and Reviews</i> | 37 |
| <i>Strategy W.35 Data Management</i> | 39 |
| 3.1.2 RESEARCH AND MONITORING ACTION PLAN | 41 |
| <i>Strategy W.33 Ecological Research and Monitoring.....</i> | 47 |
| <i>Strategy Z.6 Marine Zone Monitoring</i> | 49 |
| <i>Strategy W.36 Conducting Socioeconomic Research.....</i> | 51 |
| <i>Strategy F.3 Researching Queen Conch Population Enhancement Methods.....</i> | 54 |
| <i>Strategy F.7 Researching Impacts From Artificial Reefs.....</i> | 55 |
| <i>Strategy F.6 Fisheries Sampling</i> | 56 |
| <i>Strategy F.11 Evaluating Fishing Gear/Method Impacts</i> | 57 |
| <i>Strategy F.15 Assessing Sponge Fishery Impacts</i> | 58 |
| <i>Strategy W.18 Conducting Pesticide Research.....</i> | 58 |
| <i>Strategy W.22 Assessing Wastewater Pollutants Impacts.....</i> | 59 |
| <i>Strategy W.23 Researching Other Pollutants and Water Quality Issues</i> | 60 |
| <i>Strategy W.24 Researching Florida Bay Influences.....</i> | 61 |
| <i>Strategy W.21 Developing Predictive Models.....</i> | 63 |
| <i>Previous Strategies.....</i> | 64 |
| 3.2 EDUCATION, OUTREACH, & STEWARDSHIP | 65 |
| 3.2.1 EDUCATION AND OUTREACH ACTION PLAN..... | 66 |
| <i>Strategy E.4 Developing Training, Workshops and School Programs.....</i> | 69 |
| <i>Strategy E.6 Continuing the Education Working Group.....</i> | 71 |
| <i>Strategy E.10 Establishing Public Forums</i> | 71 |
| <i>Strategy E.11 Participating In Special Events</i> | 72 |
| <i>Strategy E.1 Printed Product Development and Distribution.....</i> | 73 |
| <i>Strategy E.2 Continued Distribution of Audio-Visual Materials.....</i> | 76 |

| | | |
|---|---|------------|
| Strategy E.3 | Continued Development of Signs, Displays, Exhibits, and Visitor Centers | 77 |
| Strategy E.5 | Applying Various Technologies | 80 |
| Strategy E.12 | Professional Development of Education and Outreach Staff | 80 |
| 3.2.2 | VOLUNTEER ACTION PLAN | 82 |
| Strategy V.1 | Maintaining Volunteer Programs | 84 |
| Strategy V.2 | Working With Other Organization/Agency Volunteer Programs | 86 |
| Strategy V.3 | Supporting Volunteer Activities | 89 |
| | Previous Strategies | 91 |
| 3.3 | ENFORCEMENT & RESOURCE PROTECTION | 92 |
| 3.3.1 | REGULATORY ACTION PLAN | 93 |
| Strategy R.1 | Maintain the Existing Permit Program | 96 |
| Strategy R.1 | Maintain the Existing Permit Program | 96 |
| Strategy R.2 | Regulatory Review and Development | 98 |
| 3.3.2 | ENFORCEMENT ACTION PLAN | 104 |
| Strategy B.6 | Acquiring Additional Enforcement Personnel | 110 |
| 3.3.3 | DAMAGE ASSESSMENT AND RESTORATION ACTION PLAN | 113 |
| Strategy B.18 | Injury Prevention | 116 |
| Strategy B.19 | Implementing DARP Notification And Response Protocols | 118 |
| Strategy B.20 | Damage Assessment And Documentation | 119 |
| Strategy B.21 | Case Management | 122 |
| Strategy B.22 | Habitat Restoration | 123 |
| Strategy B.23 | Data Management | 127 |
| 3.3.4 | MARITIME HERITAGE RESOURCES ACTION PLAN | 129 |
| Strategy MHR.1 | MHR Permitting | 135 |
| Strategy MHR.2 | Establishing An MHR Inventory | 136 |
| Strategy MHR.3 | MHR Research and Education | 138 |
| Strategy MHR.4 | Ensuring Permit Compliance through Enforcement | 139 |
| Strategy MHR.5 | Ensuring Interagency Coordination | 140 |
| 3.4 | RESOURCE THREAT REDUCTION | 142 |
| 3.4.1 | MARINE ZONING ACTION PLAN | 143 |
| Strategy Z.1 | Sanctuary Preservation Areas | 148 |
| Strategy Z.2 | Ecological Reserves | 151 |
| Strategy Z.3 | Special-use Areas | 155 |
| Strategy Z.4 | Wildlife Management Areas | 158 |
| Strategy Z.5 | Existing Management Areas | 160 |
| 3.4.2 | MOORING BUOY ACTION PLAN | 162 |
| Strategy B.15 | Mooring Buoy Management | 165 |
| 3.4.3 | WATERWAY MANAGEMENT ACTION PLAN | 168 |
| Strategy B.1 | Boat Access | 172 |
| Strategy B.4 | Waterway Management/Marking | 173 |
| 3.4.4 | WATER QUALITY ACTION PLAN | 178 |
| FLORIDA BAY/EXTERNAL INFLUENCE STRATEGIES | | 183 |
| Strategy W.19 | Florida Bay Freshwater Flow | 183 |
| DOMESTIC WASTEWATER STRATEGIES | | 185 |
| Strategy W.3 | Addressing Wastewater Management Systems | 185 |
| Strategy W.5 | Developing and Implementing Water Quality Standards | 188 |
| Strategy W.7 | Resource Monitoring of Surface Discharges | 189 |
| STORMWATER STRATEGIES | | 190 |
| Strategy W.11 | Stormwater Retrofitting | 190 |
| Strategy W.14 | Instituting Best Management Practices | 190 |
| MARINA AND LIVE-ABOARD STRATEGIES | | 192 |
| Strategy B.7 | Reducing Pollution Discharges | 192 |
| Strategy L.1 | Elimination of Wastewater Discharge From Vessels | 193 |
| Strategy L.3 | Reducing Pollution From Marina Operations | 195 |

| | |
|--|------------|
| LANDFILL STRATEGY | 197 |
| <i>Strategy L.7 Assessing Solid Waste Disposal Problem Sites</i> | 197 |
| HAZARDOUS MATERIALS STRATEGIES..... | 199 |
| <i>Strategy W.15 HAZMAT Response</i> | 199 |
| <i>Strategy W.16 Spill Reporting</i> | 200 |
| <i>Strategy L.10 HAZMAT Handling</i> | 201 |
| MOSQUITO SPRAYING STRATEGY | 202 |
| <i>Strategy W.17 Refining the Mosquito Spraying Program</i> | 202 |
| CANAL STRATEGY | 203 |
| <i>Strategy W.10 Addressing Canal Water Quality</i> | 203 |
| <i>Previous Strategies</i> | 205 |
| 3.5 ADMINISTRATION, COMMUNITY RELATIONS AND POLICY COORDINATION..... | 206 |
| FUNCTION 1: SANCTUARY ADMINISTRATION..... | 207 |
| FUNCTION 2: COMMUNITY RELATIONS | 213 |
| FUNCTION 3: POLICY DEVELOPMENT AND COORDINATION | 214 |
| <i>Strategy OP.1 Addressing Administrative Policy Issues</i> | 219 |
| <i>Strategy OP.2 Addressing Resource Policy Issues</i> | 220 |
| <i>Strategy OP.3 Addressing Legal Issues</i> | 220 |
| FUNCTION 4: THE SANCTUARY ADVISORY COUNCIL..... | 221 |
| 3.5.2 EVALUATION ACTION PLAN | 223 |
| <i>Strategy EV.1 Measuring Sanctuary Performance Over Time</i> | 225 |
| APPENDICES | 236 |
| APPENDIX A - THE NATIONAL MARINE SANCTUARIES ACT..... | 237 |
| APPENDIX B - THE FLORIDA KEYS NATIONAL MARINE SANCTUARY AND PROTECTION ACT..... | 251 |
| APPENDIX C - FKNMS REGULATIONS | 270 |
| APPENDIX D - FKNMS DESIGNATION DOCUMENT | 323 |
| APPENDIX E - FKNMS ADVISORY COUNCIL (NOVEMBER 2001)..... | 330 |
| APPENDIX F - AGREEMENTS FOR THE INTEGRATED MANAGEMENT OF THE FLORIDA KEYS NATIONAL MARINE SANCTUARY | 335 |
| APPENDIX G - VESSEL OPERATIONS/PWC MANAGEMENT REGULATORY ALTERNATIVES | 339 |
| APPENDIX H – PUBLIC COMMENTS AND RESPONSES | 341 |

List of Figures

| | | |
|------------|---|-----|
| Figure 1.1 | The National Marine Sanctuary System | 1 |
| Figure 1.2 | The Florida Keys National Marine Sanctuary Boundaries..... | 5 |
| Figure 1.3 | Reef groundings of ships greater than 50m in length before and after the creation of the ATBA. | 9 |
| Figure 1.4 | FKNMS boundary, ATBA and PSSA | 10 |
| Figure 3.1 | NMSP Performance Evaluation Logic Model | 225 |

List of Tables

| | | |
|------------|---|-----|
| Table 3.0 | Crosswalk of 1996 Management Plan and 2006 Revised Management Plan Action Plans and Strategies..... | 20 |
| Table 3.1 | Action Strategy Implementation Over Five Years Under Three Funding Scenarios..... | 27 |
| Table 3.2 | Estimated costs of the Science Management and Administration Action Plan | 34 |
| Table 3.3 | Estimated costs of the Research and Monitoring Action Plan | 45 |
| Table 3.4 | Estimated costs of the Education and Outreach Action Plan | 68 |
| Table 3.5 | Estimated costs of the Volunteer Action Plan | 83 |
| Table 3.6 | Estimated costs of the Regulatory Action Plan..... | 95 |
| Table 3.7 | Estimated costs of the Enforcement Action Plan | 109 |
| Table 3.8 | Estimated costs of the Damage Assessment and Restoration Action Plan..... | 115 |
| Table 3.9 | Estimated costs of the Maritime Heritage Resources Action Plan | 134 |
| Table 3.10 | Estimated costs of the Marine Zoning Action Plan..... | 147 |
| Table 3.11 | Criteria for the Creation and Establishment of the Tortugas Ecological Reserve..... | 152 |
| Table 3.12 | Estimated costs of the Mooring Buoy Action Plan..... | 164 |
| Table 3.13 | Estimated costs of the Waterway Management Action Plan..... | 171 |
| Table 3.14 | Estimated costs of the Water Quality Action Plan..... | 181 |
| Table 3.15 | Estimated costs of the Operations Action Plan/Policy Development and Coordination Function..... | 217 |
| Table 3.16 | Estimated costs of the Evaluation Action Plan..... | 224 |
| Table 3.17 | Science Management and Administration Action Plan Performance Measures | 227 |
| Table 3.18 | Science Research and Monitoring Action Plan Performance Measures..... | 221 |
| Table 3.19 | Education and Outreach Action Plan Performance Measures | 221 |
| Table 3.20 | Volunteer Action Plan Performance Measures | 222 |
| Table 3.21 | Regulatory Action Plan Performance Measures..... | 222 |
| Table 3.22 | Enforcement Action Plan Performance Measures | 223 |
| Table 3.23 | Damage Assessment & Restoration Program Action Plan Performance Measures..... | 223 |
| Table 3.24 | Maritime Heritage Resources Action Plan Performance Measures | 224 |
| Table 3.25 | Marine Zoning Action Plan Performance Measures..... | 224 |
| Table 3.26 | Mooring Buoy Action Plan Performance Measures | 226 |
| Table 3.27 | Waterway Management Action Plan Performance Measures..... | 226 |
| Table 3.28 | Water Quality Action Plan Performance measures..... | 227 |
| Table 3.29 | Operations Action Plan Administration Function Performance Measures..... | 227 |
| Table 3.30 | Operations Action Plan Sanctuary Advisory Council Performance Measures | 228 |

Acronyms

| | |
|---------|---|
| ACHP | Advisory Council on Historic Preservation |
| AGRRA | Atlantic and Gulf Rapid Reef Assessment Program |
| ASA | Abandoned Shipwreck Act |
| ATBA | Areas to Be Avoided |
| AWT | Advanced Wastewater Treatment |
| CAD | Computer Automated Dispatch |
| CERCLA | Comprehensive Environmental Response, Compensation, and Liability Act |
| CERP | Comprehensive Everglades Restoration Plan |
| CFR | Code of Federal Regulations |
| CRCP | Coral Reef Conservation Program |
| DARP | Damage Assessment and Restoration Program |
| DEP | Florida Department of Environmental Protection |
| DTNP | Dry Tortugas National Park |
| EIS | Environmental Impact Statement |
| EPA | U.S. Environmental Protection Agency |
| ESA | Endangered Species Act |
| F.S. | Florida Statutes |
| FAC | Florida Administrative Code |
| FDACS | Florida Department of Agriculture and Consumer Services |
| FDCA | Florida Department of Community Affairs |
| FDHR | Florida Division of Historical Resources |
| FDOT | Florida Department of Transportation |
| FKNMS | Florida Keys National Marine Sanctuary |
| FKNMSPA | Florida Keys National Marine Sanctuary Protection Act |
| FPS | Florida Park Service |
| FR | Federal Register |
| FWC | Florida Fish and Wildlife Conservation Commission |
| FWRI | Fish and Wildlife Research Institute |
| FY | Federal Fiscal Year |
| GIS | Geographic Information System |
| GMD | Growth Management Division (Monroe County) |
| GMFMC | Gulf of Mexico Fishery Management Council |
| GPS | Global Positioning System |
| HAZMAT | Hazardous Materials |
| ICS | Incident Command Structure |
| ICW | Intra-coastal Waterway |
| IMO | International Maritime Organization |
| MBTA | Migratory Bird Treaty Act |
| MEERA | Marine Ecosystem Event Response and Assessment |
| MHR | Maritime Heritage Resources |
| MMPA | Marine Mammal Protection Act |
| MMS | Minerals Management Service |
| MOA | Memorandum of Agreement |
| MOU | Memorandum of Understanding |

| | |
|----------|---|
| MRD | Marine Resources Division (Monroe County) |
| NCCOS | National Centers for Coastal Ocean Science |
| NEPA | National Environmental Policy Act |
| NGO | Non-governmental Organization |
| NHPA | National Historic Preservation Act |
| NMFS | National Marine Fisheries Service |
| NMS | National Marine Sanctuary |
| NMSA | National Marine Sanctuary Act |
| NMSF | National Marine Sanctuary Foundation |
| NMSP | National Marine Sanctuary Program |
| NOAA | National Oceanic and Atmospheric Administration |
| NOAA/OLE | NOAA Office of Law Enforcement |
| NOS | National Ocean Service |
| NPDES | National Pollutant Discharge Elimination System |
| NPS | National Park Service |
| NRDA | Natural Resource Damage Assessment Claims |
| NURC | National Undersea Research Center |
| OFW | Outstanding Florida Waters |
| OSDS | On-Site Disposal System |
| OSTDS | On-Site Sewage Treatment and Disposal System |
| PREP | National Prepared for Response Exercise Program |
| PSSA | Particularly Sensitive Sea Area |
| RECON | Reef Ecosystem Condition Program |
| REEF | Reef Environmental Education Foundation |
| RNA | Research Natural Area |
| RSMAS | University of Miami/Rosenstiel School of Marine and Atmospheric Science |
| SAFMC | South Atlantic Fishery Management Council |
| SAP | Science Advisory Panel |
| SAV | Submerged Aquatic Vegetation |
| SCR | Submerged Cultural Resources |
| SEFSC | Southeast Fisheries Science Center |
| SFWMD | South Florida Water Management District |
| SHIELDS | Sanctuary Hazardous Incident Emergency Logistics Database System |
| SPA | Sanctuary Preservation Area |
| SWIM | Surface Water Improvement and Management Act |
| SWM | Stormwater Management |
| TAC | Technical Advisory Committee |
| TNC | The Nature Conservancy |
| USACE | U.S. Army Corps of Engineers |
| USCG | U.S. Coast Guard |
| USDOC | U.S. Department of Commerce |
| USDOI | U.S. Department of Interior |
| USDOS | U.S. Department of State |
| USDOT | U.S. Department of Transportation |
| USFWS | U.S. Fish and Wildlife Service |
| USGS | U.S. Geological Survey |
| WAMS | Waterway Assessment and Marking System |

WMA Wildlife Management Area
WQPP Water Quality Protection Program
WQSC Water Quality Steering Committee



1.0 INTRODUCTION

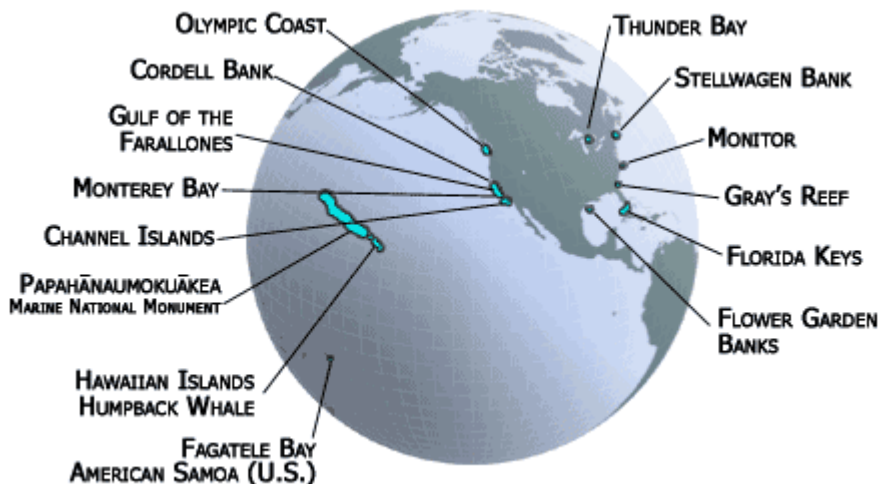
1.1 The National Marine Sanctuary Program (NMSP)

The National Marine Sanctuary Program (NMSP) is a network of 14 marine protected areas (Figure 1.1), encompassing marine resources from Washington State to the Florida Keys, and Lake Huron to American Samoa. The National Oceanic and Atmospheric Administration's (NOAA) National Ocean Service (NOS) has managed the nation's marine sanctuary system since passage of the Marine Protection, Research and Sanctuaries Act of 1972. Title III of that Act is now called the National Marine Sanctuaries Act (NMSA), which is found in Appendix A.

Today, the national marine sanctuary system contains deep-ocean gardens, near-shore coral reefs, whale migration corridors, deep-sea canyons, and underwater archaeological sites. They range in size from one-quarter square mile in Fagatele Bay, American Samoa, to almost 138,000 square miles of Pacific Ocean including the Northwest Hawaiian Islands - the largest marine protected area in the world. Together, these sites protect nearly 150,000 square miles of coastal and open ocean waters and habitats. While some activities are managed to protect resources, certain multiple uses, such as recreation, commercial fishing, and shipping are allowed to the extent that they are consistent with each site's resource protection mandates. Research, education, outreach, and enforcement activities are major components in each site's program of resource protection.

The NMSP is recognized around the world for its commitment to management of marine protected areas within which primary emphasis is placed on the protection of living marine resources and our nation's maritime heritage resources.

Figure 1.1. The National Marine Sanctuary System



The NMSP Vision:
People value marine sanctuaries as treasured places protected for future generations.

The NMSP Mission:
To serve as the trustee for the national system of marine protected areas to conserve, protect, and enhance their biodiversity, ecological integrity and cultural legacy.

1.2 The Florida Keys National Marine Sanctuary (FKNMS)

Historical Setting

Warning signs of the fragility and finite nature of the region's marine resources have been present in the Florida Keys for years. In 1957, a group of conservationists and scientists met at Everglades National Park to discuss the demise of the coral reef resources at the hands of those attracted by its beauty and uniqueness. The conference resulted in the 1960 creation of the world's first underwater park, John Pennekamp Coral Reef State Park. However, in the following decade, public outcry continued over pollution, overfishing, physical impacts, overuse, and user conflicts. The concerns continued to be voiced by environmentalists and scientists alike throughout the 1970s and into the 1990s.

As a result, additional management efforts were instituted to protect the Keys' coral reefs. In the Upper Keys, Key Largo National Marine Sanctuary was established in 1975 to protect 103 square nautical miles of coral reef habitat from north of Carysfort Lighthouse to south of Molasses Reef. In the Lower Keys, the 5.32 square nautical mile Looe Key National Marine Sanctuary was established in 1981.

Despite these efforts, oil drilling proposals and reports of deteriorating water quality occurred throughout the 1980s. At the same time, scientists were assessing coral bleaching and diseases, long-spined urchin die-offs, loss of living coral cover, a major seagrass die-off, and declining reef fish populations. Such threats prompted Congress to act. In 1988, Congress reauthorized the National Marine Sanctuary Program and ordered a feasibility study for possible expansion of Sanctuary sites in the Florida Keys - a directive that signaled that the health of the Keys ecosystem was of national concern and an endorsement of the NMSP's management successes at Key Largo and Looe Key National Marine Sanctuaries.

The feasibility studies near Alligator Reef, Sombrero Key, and westward from American Shoal were overshadowed by several natural events and ship groundings that precipitated the designation of the Florida Keys National Marine Sanctuary (FKNMS). Three large ships ran aground on the coral reef during one 18-day period in the fall of 1989. Although people cite the ship groundings as the issue triggering Congressional action, it was, in fact, the cumulative degradation and the threat of oil drilling, along with the groundings. These multiple threats prompted the late Congressman Dante Fascell to introduce a bill into the House of Representatives in November of 1989. Congressman Fascell had long been an environmental supporter of South Florida and his action was very timely. Senator Bob Graham, also known for his support of environmental issues in Washington and as a Florida Governor, sponsored the bill in the Senate. Congress gave its bipartisan support, and on November 16, 1990, President George H.W. Bush signed the bill into law.

With designation of the Florida Keys National Marine Sanctuary in 1990, several protective measures were implemented immediately, such as prohibiting oil and hydrocarbon exploration, mining or otherwise altering the seabed, and restricting large shipping traffic by establishing an Area To Be Avoided (ATBA). Additionally, protection to coral reef resources was extended by restricting anchoring on coral, touching coral, and collecting coral and live rock (a product of the aquarium

trade). Discharges from within the Sanctuary and from areas outside the Sanctuary that could potentially enter and affect local resources were also restricted in an effort to comprehensively address water quality concerns.

Administration and Legislation

The Sanctuary uses an ecosystem approach to comprehensively address the variety of impacts, pressures, and threats to the Florida Keys marine ecosystem. It is only through this inclusive approach that the complex problems facing the coral reef community can be adequately addressed.

The goal of the Sanctuary is to protect the marine resources of the Florida Keys. It also aims to interpret the Florida Keys marine environment for the public and to facilitate human uses of the Sanctuary that are consistent with the primary objective of sanctuary resource protection. The Sanctuary was created and exists under federal law, and became effective in state waters with the consent of the State of Florida. It is administered by NOAA and is jointly managed with the State of Florida under a co-trustee agreement. The Florida Governor and Cabinet, sitting as the Board of Trustees for the State of Florida, designated the Florida Department of Environmental Protection (DEP) as the state partner for Sanctuary management. The Florida Fish and Wildlife Conservation Commission (FWC), created in 1999, enforces Sanctuary regulations in partnership with Sanctuary managers and the NOAA Office of Law Enforcement. Throughout this document when the term FKNMS managers is used in reference to a responsible or responsive entity it refers to the NOAA and State of Florida co-trustees and their designated representatives from the NMSP, DEP and FWC working cooperatively to implement the strategies outlined in this plan.

NOAA, DEP and FWC are large and diverse organizations. In some cases we have identified specific organizations we work closely with within the broader agencies but are generally separate from the direct organizational chain of the staff working at the Sanctuary. For instance, FWC also houses the Fish and Wildlife Research Institute (FWRI), which conducts and coordinates scientific research and monitoring. In addition, the Sanctuary works cooperatively with multiple state and federal agencies, numerous universities and non-governmental organizations. The relationship with some, like the US Environmental Protection Agency (EPA), is based in the legislation creating the Florida Keys National Marine Sanctuary. Other relationships have evolved through cooperative agreements and information arrangements based upon shared boundaries, shared mission and goals, and/or shared interests.

National marine sanctuaries are typically designated by the Secretary of Commerce through an administrative process established by the National Marine Sanctuary Act (NMSA). However, recognizing the importance of the Florida Keys ecosystem and the degradation of the ecosystem due to direct and indirect physical impacts, Congress passed the Florida Keys National Marine Sanctuary and Protection Act (FKNMSPA) in 1990, (P.L. 101-605) (Appendix B) designating the Florida Keys National Marine Sanctuary to be managed as a national marine sanctuary under the NMSA. President George H. W. Bush signed the FKNMSPA into law on November 16, 1990.

The FKNMSPA and NMSA require the preparation of a comprehensive management plan and implementing regulations to protect Sanctuary resources. This *Revised Management Plan* responds to the requirements of the FKNMSPA and NMSA. The implementing regulations, effective as of 1 July

1997, are found at 15CFR922 and in Appendix C. The designation document¹ for the FKNMS is found in Appendix D.

Sanctuary Boundaries

The Sanctuary's enabling legislation designated 2,800-square-nautical miles of coastal waters surrounding the Florida Keys as the Florida Keys National Marine Sanctuary. The Sanctuary's boundary was amended in 2001 when the Tortugas Ecological Reserve was designated, significantly increasing the marine resources requiring protection.

Currently, the boundary encompasses approximately 2,900 square nautical miles (9,800 square kilometers) of coastal and ocean waters and submerged land (Figure 1.2). The boundary extends southward on the Atlantic Ocean side of the Keys, from the northeastern-most point of the Biscayne National Park along the approximate 300-foot isobath for over 220 nautical miles to the Dry Tortugas National Park. The boundary extends more than 10 nautical miles to the west of the Park boundary, where it turns north and east. The northern boundary of the Sanctuary extends to the east where it intersects the boundary of the Everglades National Park. The Sanctuary waters on the north side of the Keys encompass a large area of the Gulf of Mexico and western Florida Bay. The boundary follows the Everglades National Park boundary and continues along the western shore of Manatee Bay, Barnes Sound, and Card Sound. The boundary then follows the southern boundary of Biscayne National Park and up its eastern boundary along the reef tract at a depth of approximately 60 feet until its northeastern-most point.

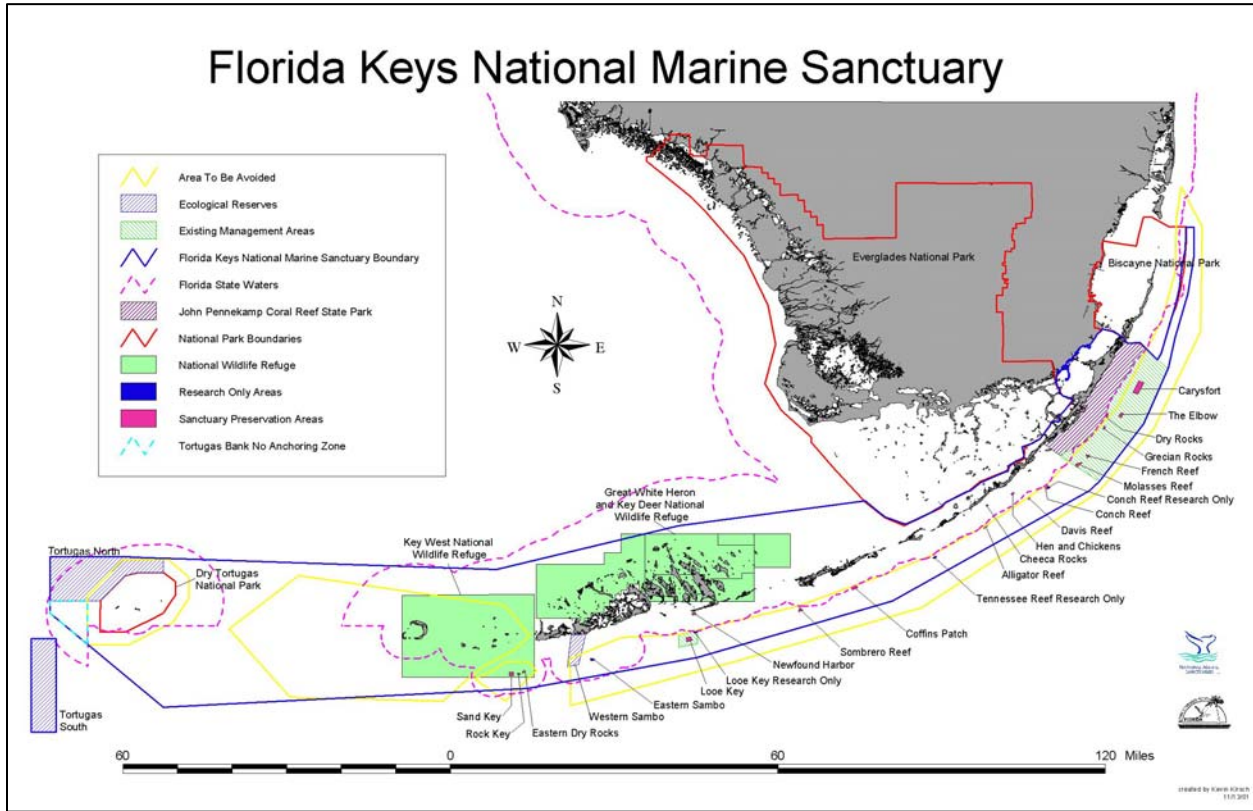
A separate, non-contiguous, 60 square nautical mile area off the westernmost portion of the Sanctuary is called the Tortugas Ecological Reserve South. The area's shallowest feature is Riley's Hump which rises to a depth of only 90 feet of water.

The Sanctuary boundary overlaps two previously existing national marine sanctuaries (Key Largo and Looe Key); four U.S. Fish and Wildlife Service (USFWS) refuges; six state parks, including John Pennekamp Coral Reef State Park; three state aquatic preserves; and other jurisdictions. Everglades National Park, Biscayne National Park and Dry Tortugas National Park are excluded from Sanctuary waters, but each shares a contiguous boundary with the Sanctuary.

The shoreward boundary of the Sanctuary is the mean high-water mark, except around the Dry Tortugas where it is the boundary of Dry Tortugas National Park. The Sanctuary boundary encompasses nearly the entire reef tract, all of the mangrove islands of the Keys, and a good portion of the region's seagrass meadows.

¹ The NMSA defines the term designation (also known as the designation document) of a sanctuary as the geographic area of the sanctuary, the characteristics of the area that give it conservation, recreational, ecological, historical, research, educational, or esthetic value, and the types of activities that will be subject to regulation to protect those characteristics.

Figure 1.2. The Florida Keys National Marine Sanctuary Boundaries



Socio-Economic Context

The environment and the economy are inextricably linked in the Florida Keys, making management and protection of existing resources and reducing impacts critical if the economy is to be sustained. Tourism is the number one industry in the Florida Keys, with over \$1.2 billion dollars being spent annually by over 3 million visitors. The majority of visitors participate in activities such as snorkeling, SCUBA diving, recreational fishing, viewing wildlife and studying nature. Recreational and commercial fishing are the next most important sectors of the local economy, annually contributing an estimated \$500 million and \$57 million respectively (marineeconomics.noaa.gov).

Because of the recreational and commercial importance of the marine resources of the Florida Keys, protecting these Sanctuary resources is valuable not only for the environment but also for the economy. The special marine resources of the region, which led to the area’s designation as a national marine sanctuary, contribute to the high quality of life for residents and visitors. Without these unique marine resources, the quality of life and the economy of the Keys would decline.

1.3 The Management Plan Review Process

What is management plan review?

In 1992, when Congress reauthorized the NMSA, it required all national marine sanctuaries to review their management plans every five years in order to monitor and evaluate the progress of the national mission to protect national resources. The Florida Governor and Cabinet, as trustees for the state, also mandated a five-year review of the Florida Keys National Marine Sanctuary Management Plan in their January 28, 1997 resolution.

The Sanctuary's management plan review creates a road map for future actions based on past experience and outcomes. The review reevaluates the goals and objectives, management techniques, strategies, and actions identified in the existing management plan. It provides the opportunity to take a close and comprehensive look at outcomes and plan for future management of the Sanctuary.

The 1996 Florida Keys National Marine Sanctuary Management Plan

After the initial six-year FKNMS planning process, a comprehensive management plan for the Sanctuary was implemented in July 1997. The management plan focused on ten action plans which were largely non-regulatory in nature and involved educating citizens and visitors, using volunteers to build stewardship for local marine resources, appropriately marking channels and waterways, installing and maintaining mooring buoys to prevent anchor damage to coral and seagrass, surveying maritime heritage resources, and protecting water quality. In addition to action plans, the 1996 management plan designated five types of marine zones to reduce pressures in heavily used areas, protect critical habitats and species, and reduce user conflicts. The efficacy of the marine zones is monitored Sanctuary-wide under the Research and Monitoring Action Plan.

The implementing regulations for the FKNMS became effective July 1, 1997. The 1996 management plan was published in three volumes: Volume I is the Sanctuary management plan itself (which this document updates); Volume II characterizes the natural and social environmental setting of the Sanctuary and describes the process used to develop the draft management alternatives, including environmental and socioeconomic impact analyses of the alternatives, and the environmental impact statement; Volume III contains appendices, including the texts of federal and state legislation that designate and implement the Sanctuary. All three volumes of the 1996 management plan are available on the Sanctuary Web site (floridakeys.noaa.gov) and from the Sanctuary's Key West office. Volume II is not being revised as part of this review. After public input, government review and final adoption of this five-year review and revised Management Plan, this document will replace Volumes I and III.

How does management plan review work?

Review of the 1996 management plan began in early 2001 with a meeting in Tallahassee, Florida, among federal and state partners responsible for Sanctuary management and various FKNMS and NMSP staff. The review included the FKNMS Sanctuary Advisory Council and the general public in every step of the process.

In the late spring and summer of 2001, FKNMS staff, working closely with the Sanctuary Advisory Council, held scoping meetings and re-convened action plan working groups that had been created during development of the 1996 plan. The scoping meetings were held in Marathon, Key Largo, and

Key West, and gave the public the opportunity to meet with Sanctuary Advisory Council members, Sanctuary managers, and FKNMS staff. The meetings included round-table discussions on every action plan, and participants had the opportunity to move freely between the various topics being discussed at each table.

The scoping period for the revised management plan lasted from June 8 through July 20, 2001. Approximately 30 comments were received - a sharp contrast to the more than 6000 public comments received during the comment period for the 1996 plan. In addition, the working groups held more than three dozen meetings between June and September 2001 to discuss, evaluate, revise and update action plans. Sanctuary Advisory Council members and FKNMS staff who had served on the working groups presented the proposed revisions to the Sanctuary Advisory Council at three meetings in October 2001. The full advisory council recommended minor changes and approved each action plan in this document. The Sanctuary Advisory Council membership and Action Plan Working Group membership lists are included in Appendix E.

Between 2001 - 2004, numerous drafts of each action plan and strategy were prepared and reviewed by the FKNMS Management Team, Action Plan Leads and National Marine Sanctuary Program Headquarters staff. In February 2005 the *Draft Revised Management Plan* was published and distributed for public review and comment. A notice was placed in the Federal Register. A series of three public meetings were held in the Florida Keys including a meeting in each of Key Largo, Marathon and Key West. This formal comment period extended from February 15, 2005 to April 15, 2005. Responses were received from approximately 20 commenters. Between May 2005 and February 2006 the comments were reviewed, consolidated into a single document and distributed for review and response to the FKNMS Management Team and Action Plan Leads. The responses to the comments were incorporated into the *Draft Revised Management Plan*, as appropriate. Between August 2006 and May 2007 FKNMS staff and staff in the NMSP and the FL Department of Environmental Protection headquarters units worked together to review, refine and ensure the *Draft Revised Management Plan* reflected the most recent and up-to-date information and management practices and policies.

The Role of Sanctuary Management as Facilitators

A sanctuary management plan is designed to identify the best and most practical strategies to achieve common goals, while getting the most out of public investment. Achieving this aim cannot be accomplished solely through the authorities and resources of an individual sanctuary management authority. It requires a broad partnership of programs, authorities, and resources, coordinated to meet the needs of both the sanctuary site and the broader region of which it is a part.

Consequently, the management plan review process first focuses on finding the most effective strategies to accomplish common goals. These strategies are the product of a process that brings together constituents, institutions, and interested parties in directed working groups to address specified problem areas. How these strategies are to be implemented – with whose authorities, investments, and personnel – is determined subsequent to developing the best strategies. While the Sanctuary program commits to carrying out specific strategies as budgets allow, in many cases implementation becomes the responsibility of other institutions such as state, federal, or local partners, that have the authorities, the appropriate program, and/or the resources required. The intent of identifying these responsibilities is not to create unfunded mandates for other agencies, but rather to integrate management actions so as to maximize protection of Sanctuary resources.

In this process, the sanctuary management plan becomes a framework in which the role of all partners is clarified. The sanctuary assumes the role of facilitator and integrator of a far larger body of activities and outcomes than are within the scope of its immediate authorities, programs, and resources. This facilitation role provides the mechanism for continued implementation, evaluation, and adaptation of the partnership activities documented by the plan, ensuring its continuity and overall success.

1.4 Accomplishments

There have been many accomplishments in the sanctuary beginning with the authority established under the Florida Keys National Marine Sanctuary and Protection Act of 1990 and the implementation of the management plan in 1997. An overview of the Sanctuary’s accomplishments is given here, and more details are provided within each Action Plan.

1. Area To Be Avoided. The “Area To Be Avoided” (ATBA) designation in 1990 has resulted in a significant decrease in the number of major ship groundings on the coral reefs. As Figure 1.3 illustrates, prior to 1990 there was a major ship grounding involving vessels greater than 50 m in length, nearly every year, while only two have occurred since the implementation of the ATBA. The United Nations International Maritime Organization (IMO) agreed that the ATBA should be given additional strength as a Particularly Sensitive Sea Area (PSSA) in 2002 (see Accomplishment 5 below). The ATBA regulations are at 15 CFR Part 922, Subpart P, Appendix VII. Figure 1.4 shows the ATBA, the PSSA and the Sanctuary boundary.

Figure 1.3. Reef groundings of vessels greater than 50m before & after ATBA designation.

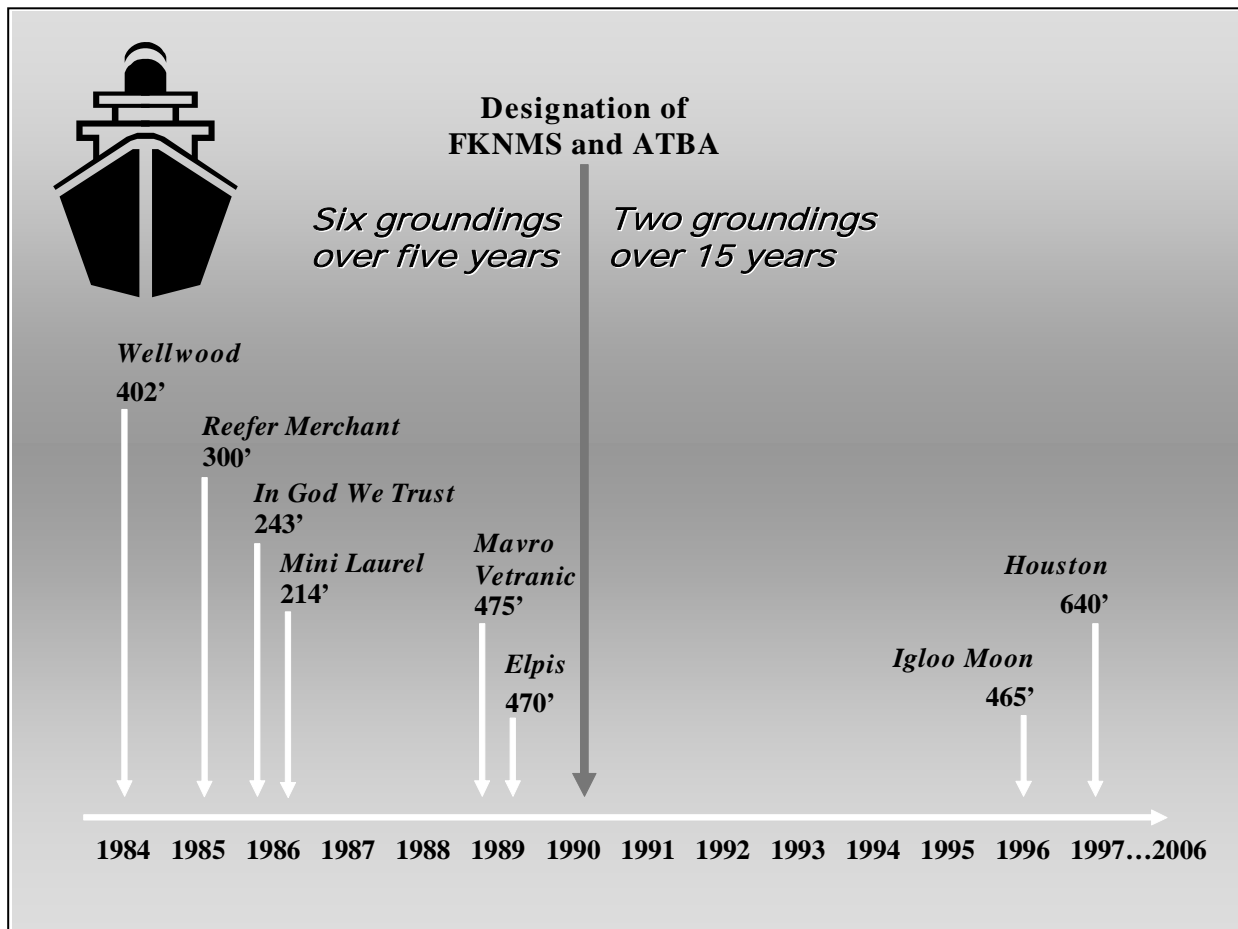
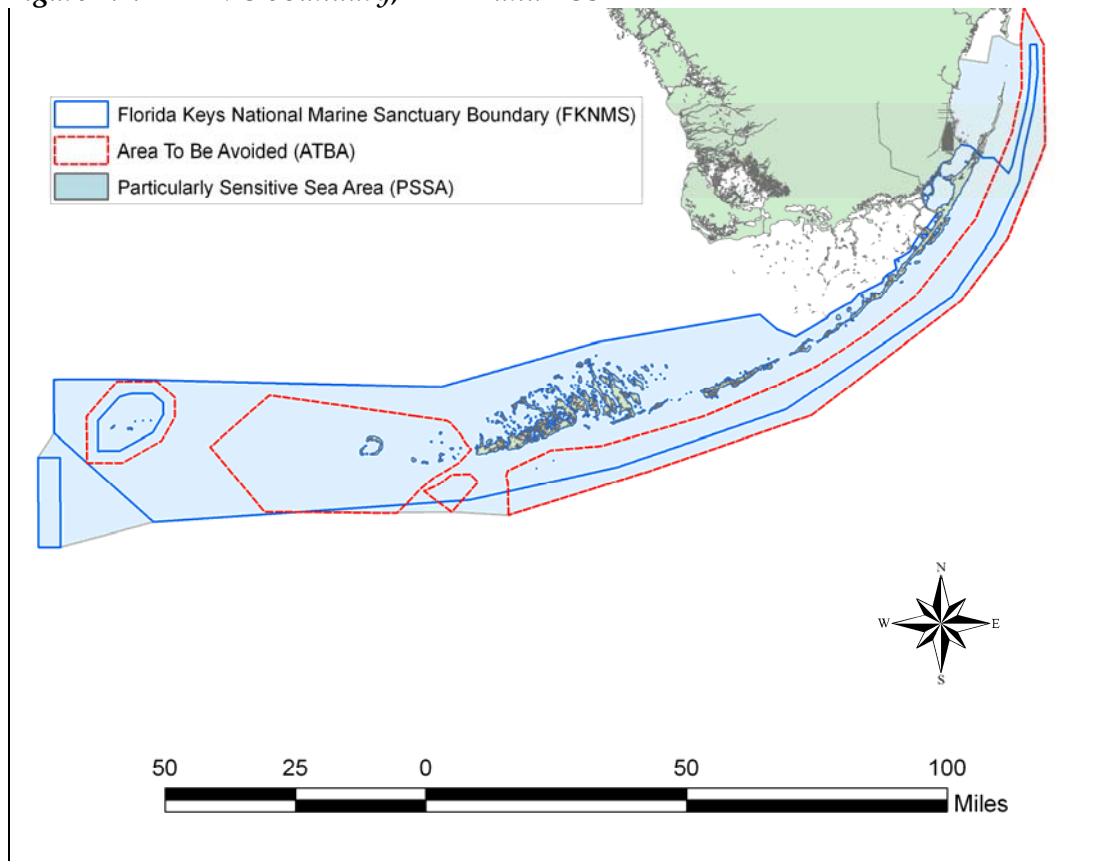


Figure 1.4. FKNMS boundary, ATBA and PSSA



2. Oil Drilling and Hard Mineral Mining Ban. A ban on these activities was established when the Sanctuary was created, and has prevented these activities from occurring in the Sanctuary.

3. The Water Quality Protection Program. This program has produced the first Water Quality Protection Program for a national marine sanctuary and has fully implemented 26 of 49 high-priority activities, many of which are carried out in cooperation with other action plans.

4. The Comprehensive Everglades Restoration Plan. The Sanctuary continues to participate in the implementation of the Comprehensive Everglades Restoration Plan (CERP). Sanctuary staff have been active on this project since 1993, including chairing a working group for the South Florida Ecosystem Restoration Task Force and staffing its science and education committees. The Sanctuary's participation seeks to protect the ecosystem's water quality by eliminating catastrophic releases of freshwater along the coastal waters of South Florida including Florida Bay following rain events. One of the goals of the CERP is to restore the water quality, quantity, timing and distribution to the South Florida ecosystem.

5. Designation of the Florida Keys as a Particularly Sensitive Sea Area. In November 2002, the United Nations International Maritime Organization approved designation of the Florida Keys as a PSSA. The designation is not accompanied by additional rules and regulations, but seeks to elevate public awareness of the threat of oil spills and hazardous materials to sensitive marine environments

and will ensure that the previously mentioned ATBA is noted not only on U.S. charts but also on nautical charts worldwide.

6. Long-term and continuing progress in the Research and Monitoring and Zoning action plans.

Research and monitoring has produced significant scientific data, hypothesis testing, mapping, trend documentation, and wide dissemination of these findings. Especially notable is the Keys-wide benthic map which provides valuable information for Sanctuary managers. In addition to the new protected zone in the Tortugas Ecological Reserve, the Sanctuary's zoning programs continue to provide invaluable data that demonstrate the success of the marine zoning program.

7. Education, Public Outreach, Sanctuary Stewardship, and Volunteerism. Through these inter-related efforts, information is flowing from scientists to managers and then to educators, who reach the next generation. More than 180,000 volunteer hours, an estimated \$2.9 million value, were donated to the Sanctuary between 1996 and 2006. Even more valuable than the dollar worth of the program is the stewardship created through volunteerism, which uniquely contributes to the long-term effectiveness of the Sanctuary.

8. Enforcement and Regulations. Both the city of Key West and the State of Florida have declared Florida Keys waters under their jurisdictions as "no-discharge" zones. Additional accomplishments in implementing the Enforcement and Regulatory Action Plans are largely a tribute to the cooperative efforts among the Florida Fish and Wildlife Conservation Commission, the Florida Park Service, the U.S. Coast Guard (USCG), and NOAA. Notable among these is the cross-deputization of state-certified law enforcement officers, which allows them to enforce numerous federal laws, including fisheries regulations, the Endangered Species Act, the National Marine Mammal Act, the Lacey Act, etc.

9. Damage Assessment and Restoration. The Damage Assessment and Restoration Action Plan is new to this document but is based on accumulated data and lessons learned since 1982. The cross-disciplinary strategies will prove useful in reducing the number of vessel groundings in Sanctuary waters as well as restoring Sanctuary resources damaged by vessels.

10. Maritime Heritage Resources. The Maritime Heritage Resources Action Plan includes a close partnership of the state, NOAA, and the Florida Advisory Council on Historic Preservation described in a programmatic agreement for resource management that was originally signed in 1998 and then renewed in 2004 (see Appendix F for more information and a Web site link for the full document). Additionally, the 2002 discovery of a previously unknown wreck within the Sanctuary has brought about a community-endorsed research and interpretation plan for the site. Overall, the Action Plan represents excellent progress in balancing resource protection, investigation and interpretation.

11. Mooring Buoys and Waterway Management (formerly Channel Marking). The Mooring Buoy and Waterway Management Action Plans have implemented simple but effective strategies for reducing vessel damage to the coral reef and to seagrass beds. The long-term success of these programs – mooring buoy strategies have been used in local Sanctuary waters since 1981 when they were introduced at the Key Largo National Marine Sanctuary – has largely been due to a unique interface of education, outreach, enforcement and research and monitoring activities.

12. Operations. Since 1997, the Sanctuary has integrated the administrative functions of two former sanctuaries – at Key Largo and Looe Key – into a single headquarters umbrella with two regional offices. This integration streamlined delivery of human resources, community relations, and policy development. It also resulted in a series of accomplishments, ranging from an updated electronic financial reporting system to the 180+-episode television series, *Waterways*.