

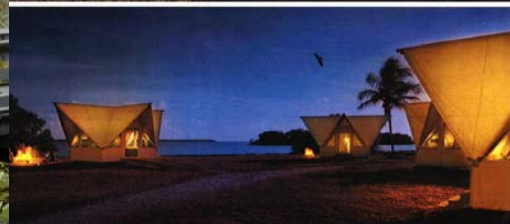
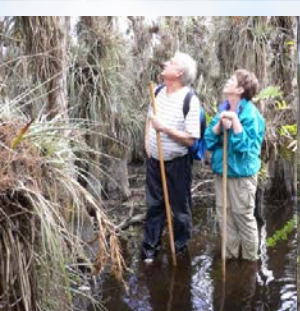


Everglades National Park Draft General Management Plan / East Everglades Wilderness Study / EIS

**April 16, 2013 – Florida Keys National Marine Sanctuary –
Sanctuary Advisory Council
Duck Key, Florida**

AGENDA

- Opening remarks – Superintendent Dan Kimball
- Draft GMP Overview with focus on Florida Bay – Fred Herling, Park Planner
- Questions and Answers/Discussion



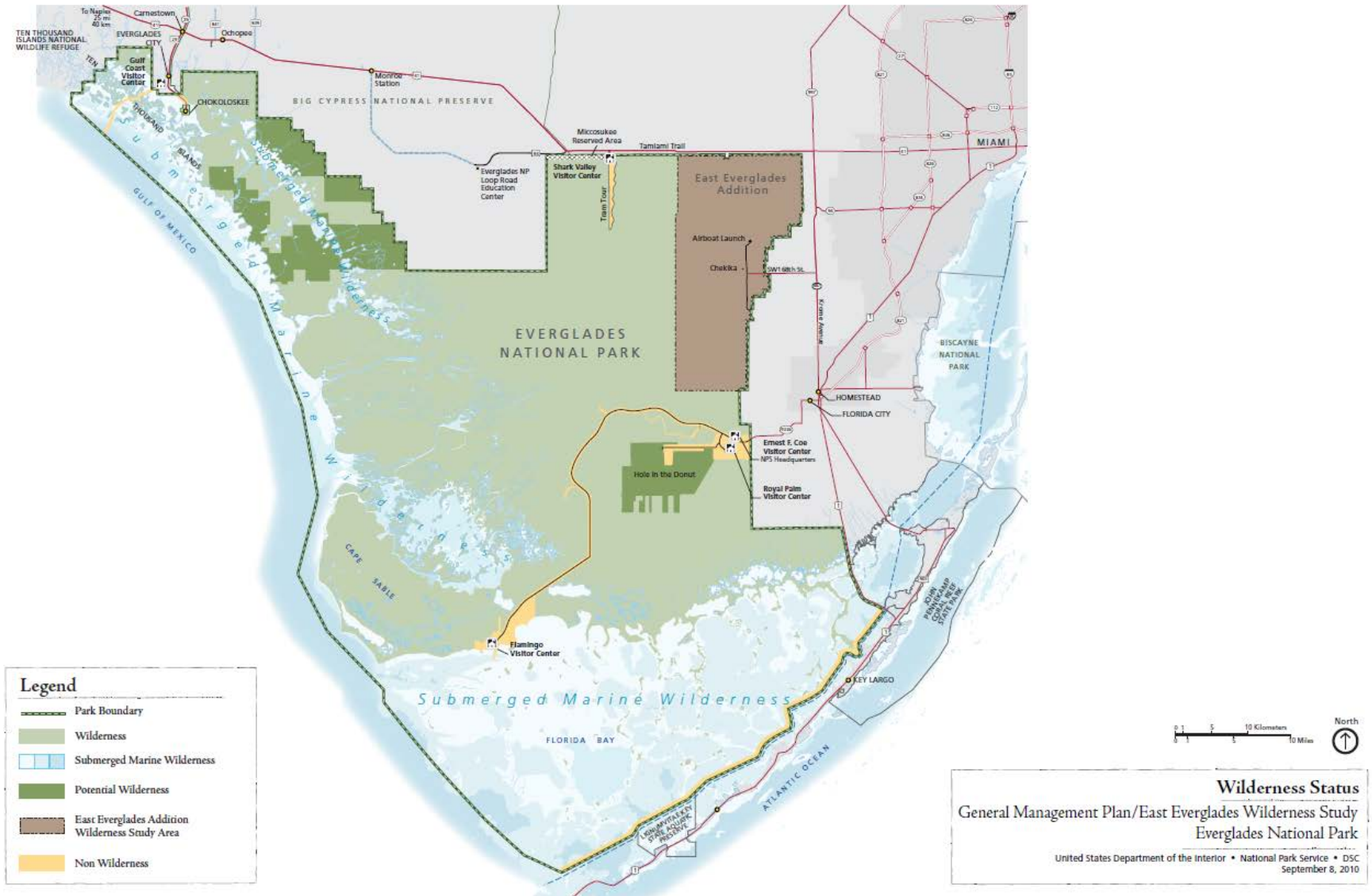
General Management Plan Overview



- GMP requirements identified in 1978 National Parks and Recreation Act
- Last park-wide plan approved in 1979 (only one since 1947 establishment)
- Everglades National Park: 1.5 million acres (1.3 million acres designated wilderness)
- East Everglades Addition: 109,600 acres added in 1989 Park Expansion Act
- Park Purpose: *Everglades National Park is a public park for the benefit and enjoyment of the people. It is set apart as a permanent wilderness preserving essential primitive conditions, including the natural abundance, diversity, behavior, and ecological integrity of the unique flora and fauna.*



Everglades National Park and its wilderness designation



Draft Everglades National Park General Management Plan / East Everglades Wilderness Study / EIS



Status and Schedule

- **Public review and comment period: February 27 – May 12, 2013**
 - All documents available on-line; limited copies of CDs, paper copies
 - 9 public meetings (3/19-21; 4/8-11, 4/16-17)
 - Numerous stakeholder meetings (FWC, SFWMD-WRAC; FKNMS SAC; fishing, conservation, recreation organizations)
- **Balance of 2013: comment analysis, revisions; develop Final GMP**
- **2014: Issue Final GMP and Record of Decision; Regulations developed (public process); begin GMP implementation**



Public Meeting Schedule (5:30 – 8:30 p.m.)



Date	Location
March 19, 2013	Homestead, Florida John D. Campbell Agricultural Center, 18710 SW 288 th Street
March 20, 2013	Islamorada, Florida Coral Shores High School, 89901 Old Highway
March 21, 2013	Everglades City, Florida Everglades City School, 415 School Drive
April 8, 2013	Dania Beach, Florida International Game Fish Association – Fishing Hall of Fame, 300 Gulfstream Way Live webcast will be available: http://parkplanning.nps.gov/EVER
April 9, 2013	Naples, Florida Edison State College, Collier Campus – Building J, 7007 Lely Cultural Parkway
April 10, 2013	Key Largo, Florida Murray Nelson Government Center, 102050 Overseas Highway
April 11, 2013	Miami, Florida Florida International University – Stadium Club, 11200 SW 8 th Street
April 16, 2013	Marathon, Florida Monroe County Emergency Operations Center
April 17, 2013	Key West, Florida Florida Keys National Marine Sanctuary, Eco-Discovery Center



The Draft GMP has several key provisions common to Preferred Alternative and other action alternatives...



- establish stakeholder-based Advisory Committee to help guide implementation, monitoring and adaptive management
- conduct strategic monitoring and user/carrying capacity efforts to support plan goals and allow for refinements over time to resource protection, visitor use, education, enforcement
- develop/redevelop visitor use areas in sustainable manner, recognizing best available science for threats from storms, sea level rise; and budget realities (Flamingo, Gulf Coast)

6 types of zones to guide appropriate resource protection, use and access:

- Developed
- Frontcountry
- **Boat Access**
- **Pole/Troll**
- **Backcountry**
- **Special Protection**





Draft General Management Plan – Proposed Management of Florida Bay

Comments on Draft GMP regarding zone boundaries, access and ingress/egress, protection and education measures will be considered in developing the Final GMP

Why Propose Pole and Troll Zones in Everglades National Park?

Based on comprehensive approach recommended by state of Florida to protect important shallow-water, seagrass areas (robust education, improved aids-to-navigation and enforcement, strategic zoning) and additional Park-specific research and analysis

What are the Proposed Objectives of Pole and Troll Zones in the Park?

Like the Snake Bight Pole/Troll Zone, the intent of additional zones would be to:

- Enhance protection of sensitive, shallow-water aquatic and wilderness resources
- Improve quality of flats fishing
- Enhance paddling and wildlife viewing opportunities
- Expand education on proper shallow-water boating

Monitoring and Adaptive Management: How to Determine Success?

- Establish baseline conditions and conduct periodic assessments (3-5 years): high-resolution aerial photography, in-water field investigation
- How well objectives are being met for resource conditions, visitor use/enjoyment
- Ongoing outreach and education
- Modify and change as needed

Florida Bay Management – Preferred Alternative



- Modeled after principles outlined in 1995 FMRI report: Scarring of Florida's Seagrasses: Assessment and Management Options
 - Implement mandatory boater education program (building on Eco-mariner program)
 - Improved Aids to Navigation, on-the-water education and enforcement
 - Strategic zoning to protect important resources while providing access compatible environmental protection and designated wilderness bay bottom
- Evaluated best available science/data on benthic conditions of Florida Bay and historic/trend data on boating use and registrations
- Park implemented pilot Snake Bight Pole/Troll Zone project (9,400 Acres) in 2011; strong public support; will document results and potential success stories for resources and use
- NPS has conducted 3 recent assessments:
 - 2008 Technical Report: Patterns of Propeller Scarring in Florida Bay
 - 2011 Snake Bight Pole and Troll Zone Monitoring Report
 - 2012 Boating Impacts to Seagrass in Florida Bay: links with physical and visitor use factors and implications for management



Florida Bay Management – Preferred Alternative (cont.)



- Preferred Alternative map reflects most damaged and susceptible areas and existing park channel system, with some obvious additions (e.g., Frank and Palm keys access)
- 2/3 of bay remains full, open access; 1/3 of bay managed as pole/troll zones
- Pole/Troll access: 78% within ½ mile and 96% within 1 mile of channel or open access areas
- Adaptive management (as is underway for Snake Bight PTZ project), with Advisory Committee involvement, and phased implementation
- 3 additional backcountry chickees



Florida Bay Map and Guide



Florida Bay Map




National Park Service
U.S. Department of the Interior
Everglades National Park
www.nps.gov/ever



Legend

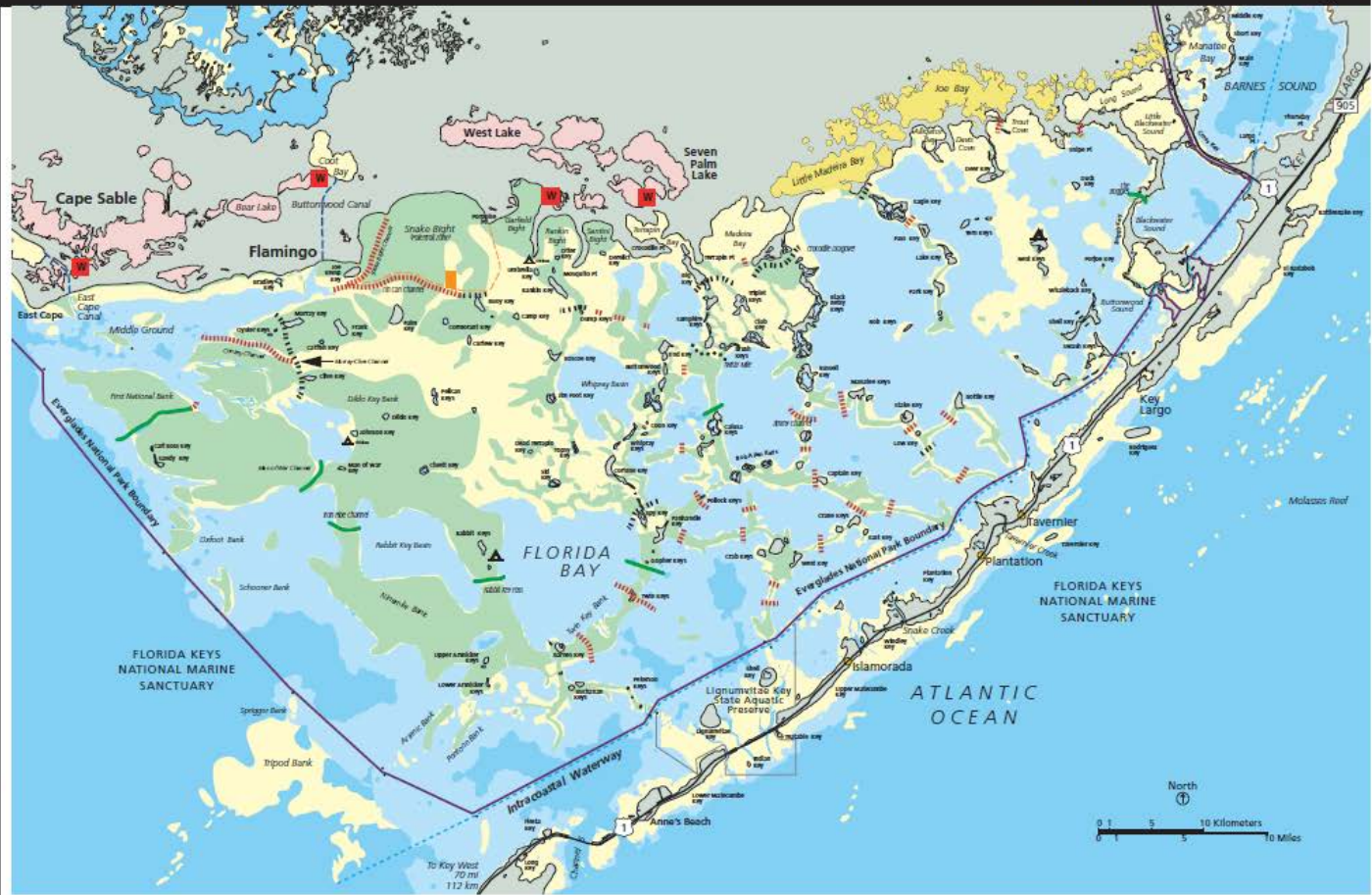
-  **3-6 feet deep.** Recommended for boats 23 feet in length or less.
-  **Less than 3 feet deep.** Recommended for boats drafting less than 12 inches. Avoid stopping and starting—even shallow boats can “crater” the bottom when getting up on plane.
-  **Shoal or banktop.** These areas can be less than 1 foot deep. Poling or trolling motors recommended.
-  **Wilderness Entry.** Paddle-in only. Only boats with motor removed from transom allowed beyond these points.
-  **Wilderness.** Only boats with motor removed from transom allowed in these waters.
-  **Wildlife Management Area.** Closed to any and all entry. Formerly known as the “Crocodile Sanctuary.”
-  **Snake Bight Pole/Troll Zone Boundary.** Combustion motors may not be used unless in Tin Can Channel, Snake Bight Channel, or the Jimmy's Lake Idle Speed-No Wake Area.
-  **Jimmy's Lake Idle Speed-No Wake Area.** Deeper area within Snake Bight Pole/Troll Zone. Combustion motors may be used at idle speed.

Passes & Channels

-  **Black.** Extremely shallow (16 inches deep or less) and often very hard to read. Use other routes in winter. Only shallow draft boats (1 foot or less) at all times. **Black dotted (***).** Extremely shallow, narrow and twisty. Not recommended.
-  **Red.** Some portions less than two feet deep and require tight turns. Extra care required to avoid damage to the bottom. Only shallow draft boats (1 foot or less).
-  **Green.** Wide channels that are usually deep and easy to read. Good for beginners. Boats drafting more than 18 inches are not recommended.

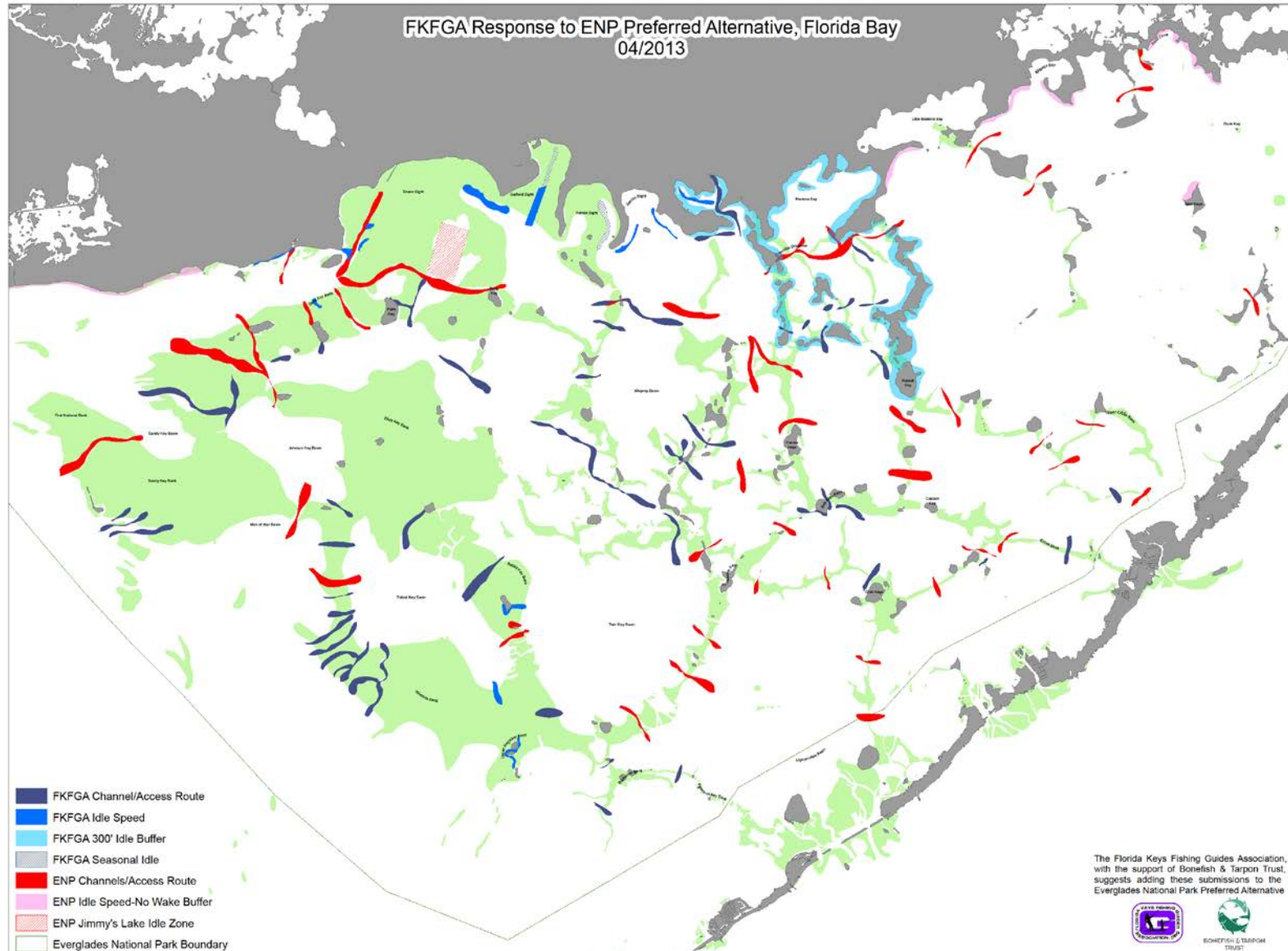
Channel Mouth & Markers. Size up the channel from a safe distance. Stay on plane and slow down. Channels are shallowest at their entrances and exits, so trim your motor. Enter the channel. If there are two stakes, stay between them. If there is only one stake, stay as close as possible to it. Arrows on the stakes point towards the channel.

Choosing Routes. Use the deepest routes to get to where you're going. For example, to get from A to B, use the wider, deeper channel just south of Gopher Keys, rather than the shallower channel at Twin Keys. Don't run around, take the long way around. It might cost you 5 minutes, but it will save you from tearing up the sea bottom.

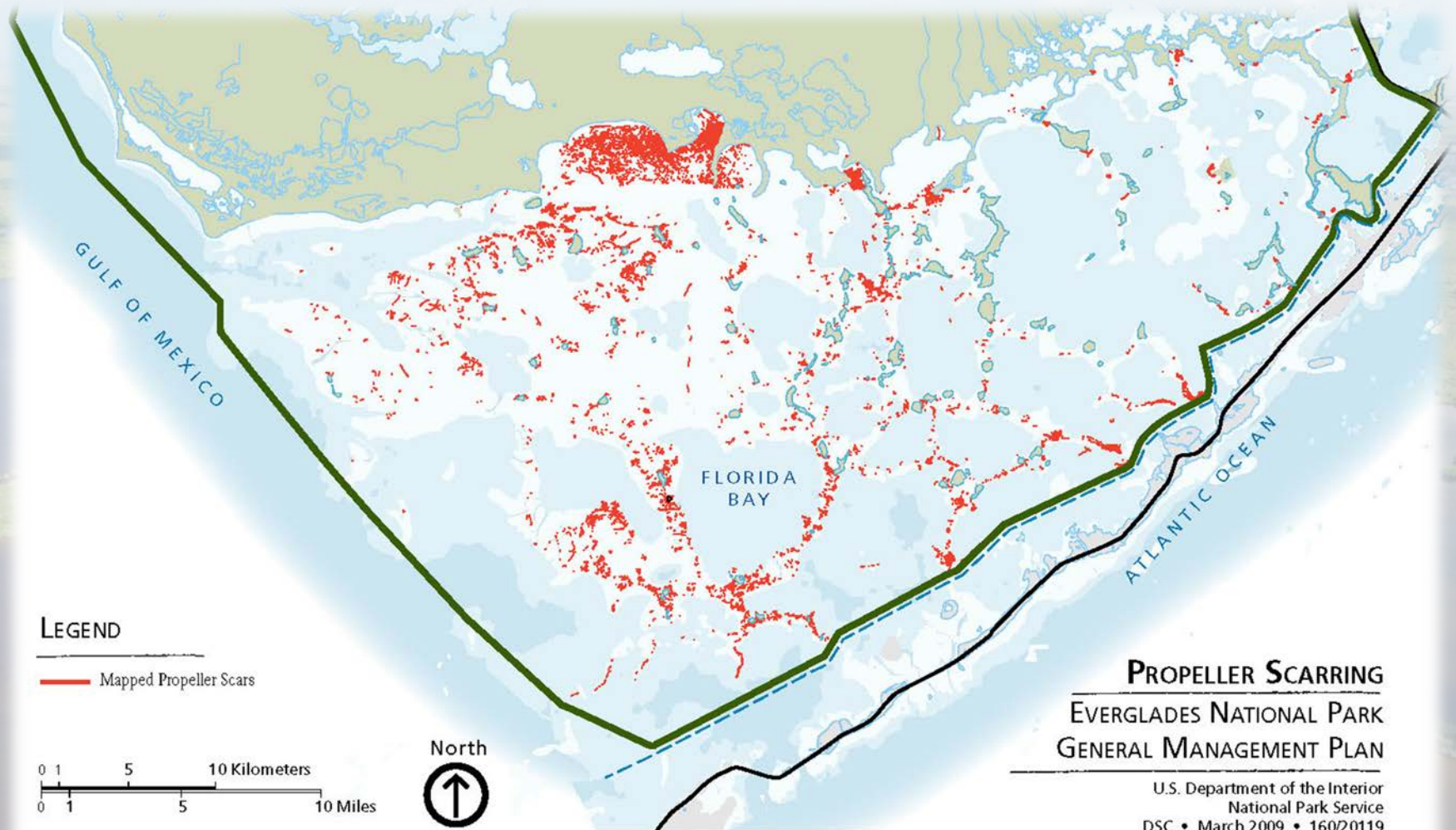


Not for navigation! • Use International Sailing Supply Waterproof Chart 33E/NOAA Chart #11451 • Not for navigation!

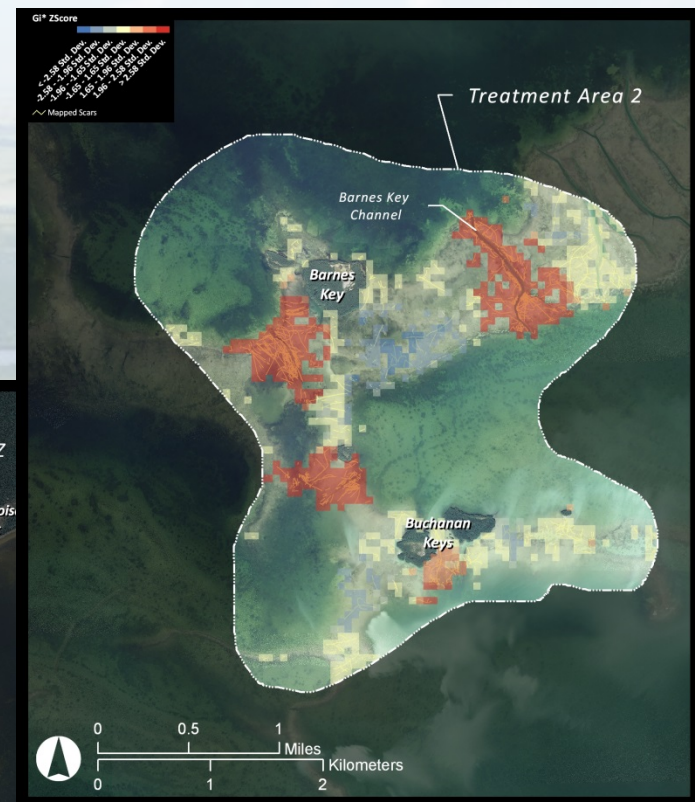
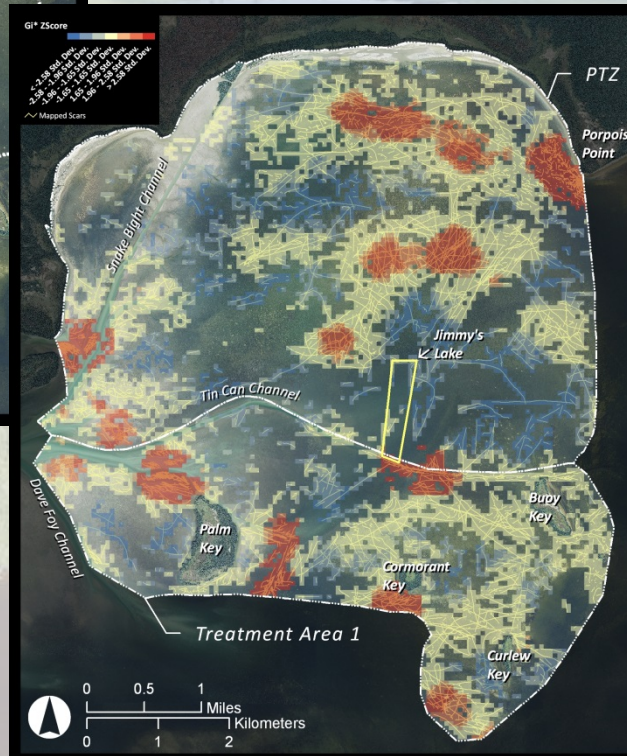
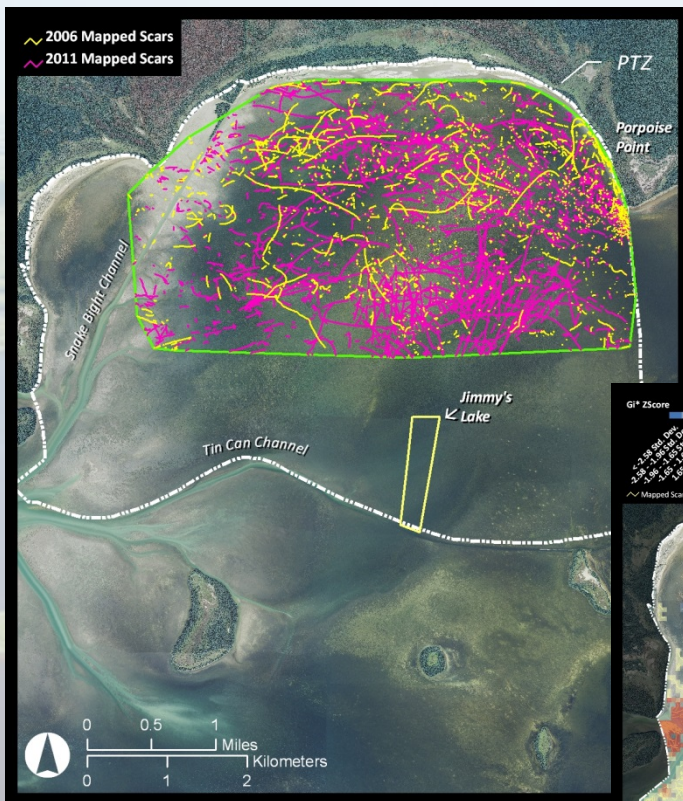
1st draft – Florida Keys Fishing Guides Association (Potential options for increased access)



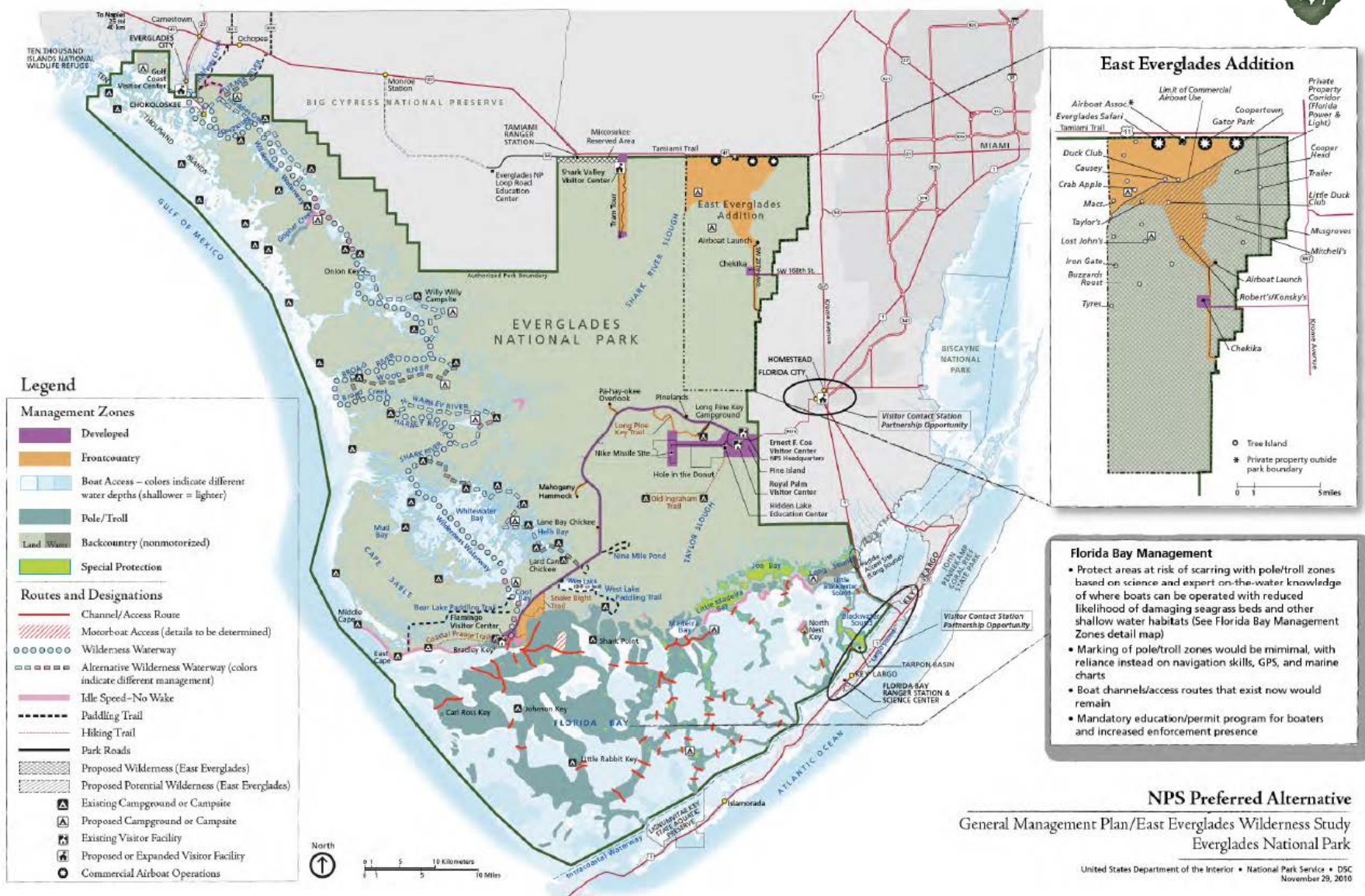
Florida Bay Propeller Scarring (2004 and 2006 aerial photography)



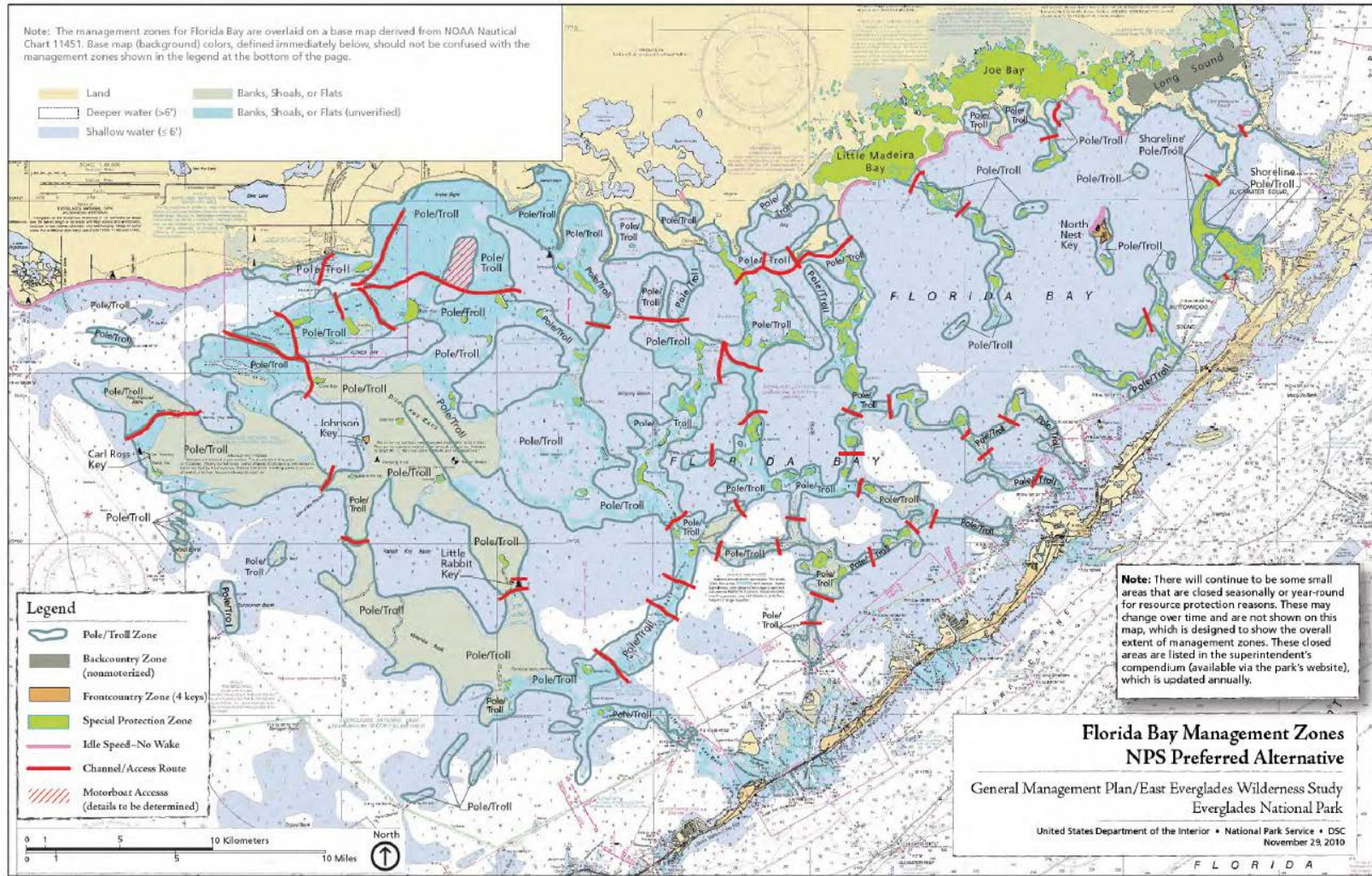
Snake Bight Pole/Troll Zone Baseline Study



Draft GMP – Preferred Alternative



Florida Bay – Preferred Alternative



Access Distance Analysis – Preferred Alternative



Everglades National Park

Preferred Alternative Pole/Troll Distance Analysis

National Park Service
U.S. Department of the Interior

Legend

Distance Intervals

0 - 0.5 Miles, 101,858 ac., 77.5%

0.51 - 1 Mile, 23,356 ac., 17.8%

1.01 - 1.5 Miles, 4,899 ac., 3.7%

> 1.5 Miles, 1,279 ac., 1%

Backcountry Zone, 2,138 ac., 0.5%

Idle Speed Zone, 880 ac., 0.2%

Pole/Troll Zone, 131,392 ac., 33%

2 Zone Identification Number

Flamingo Boat Launch

Channels

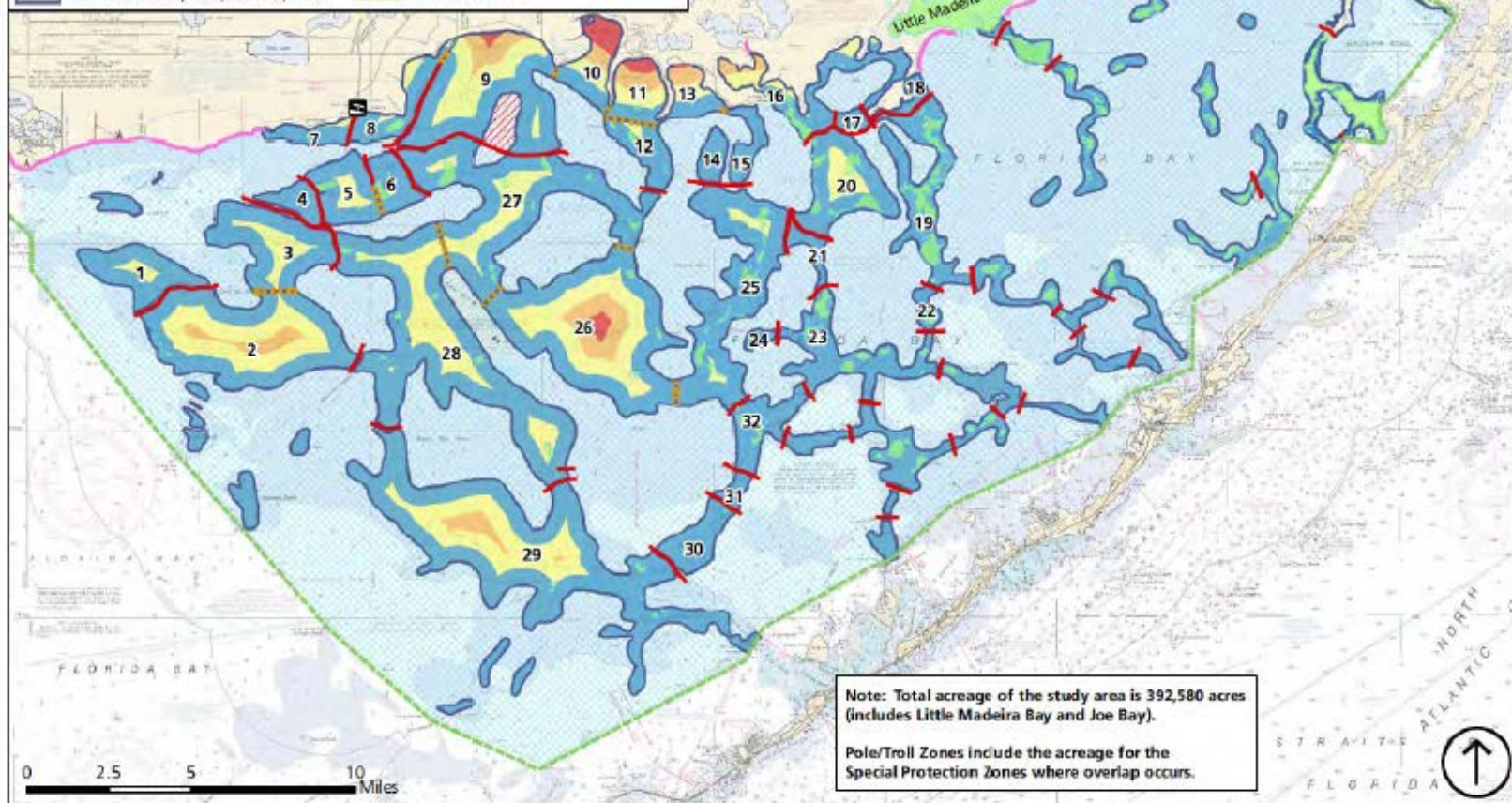
Idle Speed-No Wake

Zone Divisions

Open Bay, 246,822 ac., 63%

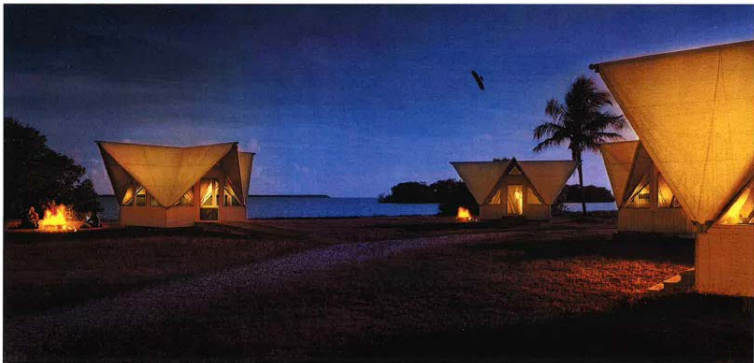
Special Protection Zone, 16,501 ac.

Park Boundary



New Flamingo Long-Term Concessions Contract (2013)

- 10-year contract (December 2013)
- Concessioner-operated marina-related services, Food/Beverage services, tent and RV campgrounds (with 5 RV units)
- Cottages (Year-round; 24 units, elevated/hardened)
 - 4 Studio units (approx. 300 SF); 12 One-Bedroom units (approx. 450 SF); 8 Two-Bedroom units (approx. 600 SF)
- Eco-tents (Seasonal; 20 units)



Florida Bay Comparison of Key Features



Feature	Alternative 1	Preferred Alternative	Alternative 2	Alternative 4
Mandatory Education/Permit	No	Yes	Yes	Yes
Improved Aids-to-Navigation	Yes	Yes	Yes	Yes
Increased on-the-water education and enforcement	No	Yes	Yes	Yes
Pole and Troll Zones (PTZ)	No	Yes (~ 33% of Bay)	No	Yes (~ 41% of Bay)
PTZ Access	N/A	78%: less than ½ mi. 18%: ½ to 1 mi.	N/A	61%: less than ½ mi. 23%: ½ to 1 mi.
Idle-speed Zones (300 ft. of mainland shoreline)	No	Yes	No	Yes
Crocodile Sanctuary	Remains closed	Closed (Research)	Little Madeira – PTZ Joe Bay - Backcountry	Closed (Research)
Long Sound	Open for all boating	Backcountry (contingent on 18-mile stretch canoe/kayak launch)	Open for all boating	Open for all boating
Enhanced range of experiences	No	Yes	Yes	Yes
Increased T&E species protection	No	Yes	Yes	Yes
New closed area(s)	No	No	No	No

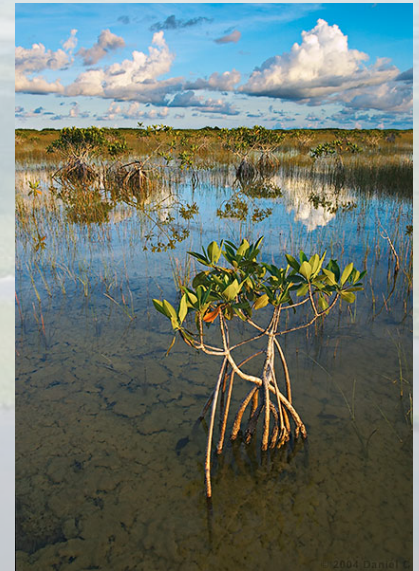




"There are no other Everglades in the world. They are, they have always been, one of the unique regions of the earth, remote, never wholly known." Nothing anywhere else is like them; their vast glittering openness, wider than the enormous visible round of the horizon...

It is a river of grass."

Marjory Stoneman Douglas - 1947





Draft GMP...Q&A/Discussion

The review period continues through May 12, 2013. You may review the document and provide comments at

<http://parkplanning.nps.gov/EVER>, then find “Draft General Management Plan” and select “Open for Comment.”

A limited number of CDs and paper copies are also available by contacting the park at 305.242.7700.

Opportunities for follow-up meetings and discussion , please contact:
Fred Herling, 305-242-7704 or fred_herling@nps.gov