



NOAA FISHERIES

(NATIONAL MARINE FISHERIES SERVICE)

NOAA FISHERIES

(NATIONAL MARINE FISHERIES SERVICE)

TRACY A. DUNN

ASSISTANT DIRECTOR

IN CHARGE OF THE SOUTHEAST DIVISION



OFFICE OF LAW ENFORCEMENT



NOAA
FISHERIES

Office of Law Enforcement

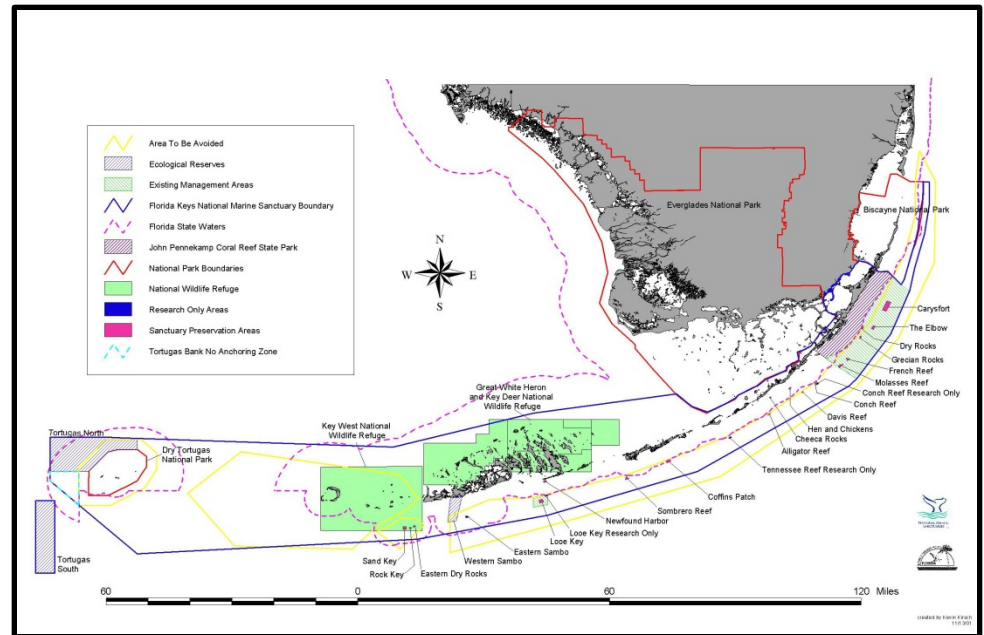
Enforcement of Priorities in the Florida Keys National Marine Sanctuary

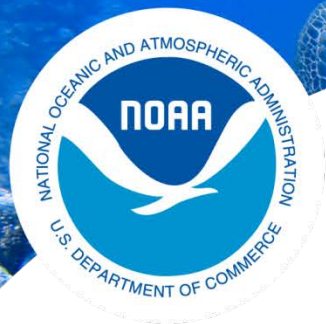


**FLORIDA FISH AND WILDLIFE
CONSERVATION COMMISSION**



NOAA





**NOAA
FISHERIES**

Office of Law Enforcement

Up to 2014 FKNMS enforcement was handled through an agreement between FKNMS and FWC.



NATIONAL MARINE
SANCTUARIES

FLORIDA KEYS





NOAA
FISHERIES

Office of Law Enforcement

Agreement provided funding for salaries for dedicated personnel and enforcement platforms

- Patrol Vehicles
- Medium range outboard patrol vessels
- Large Off Shore patrol vessel (Delivered in Jan 2006)



- Fuel
- Maintenance



**NOAA
FISHERIES**

Office of Law Enforcement

OLE has worked with state law enforcement agencies since 2002 through a program in which funding can be provided for enforcement services

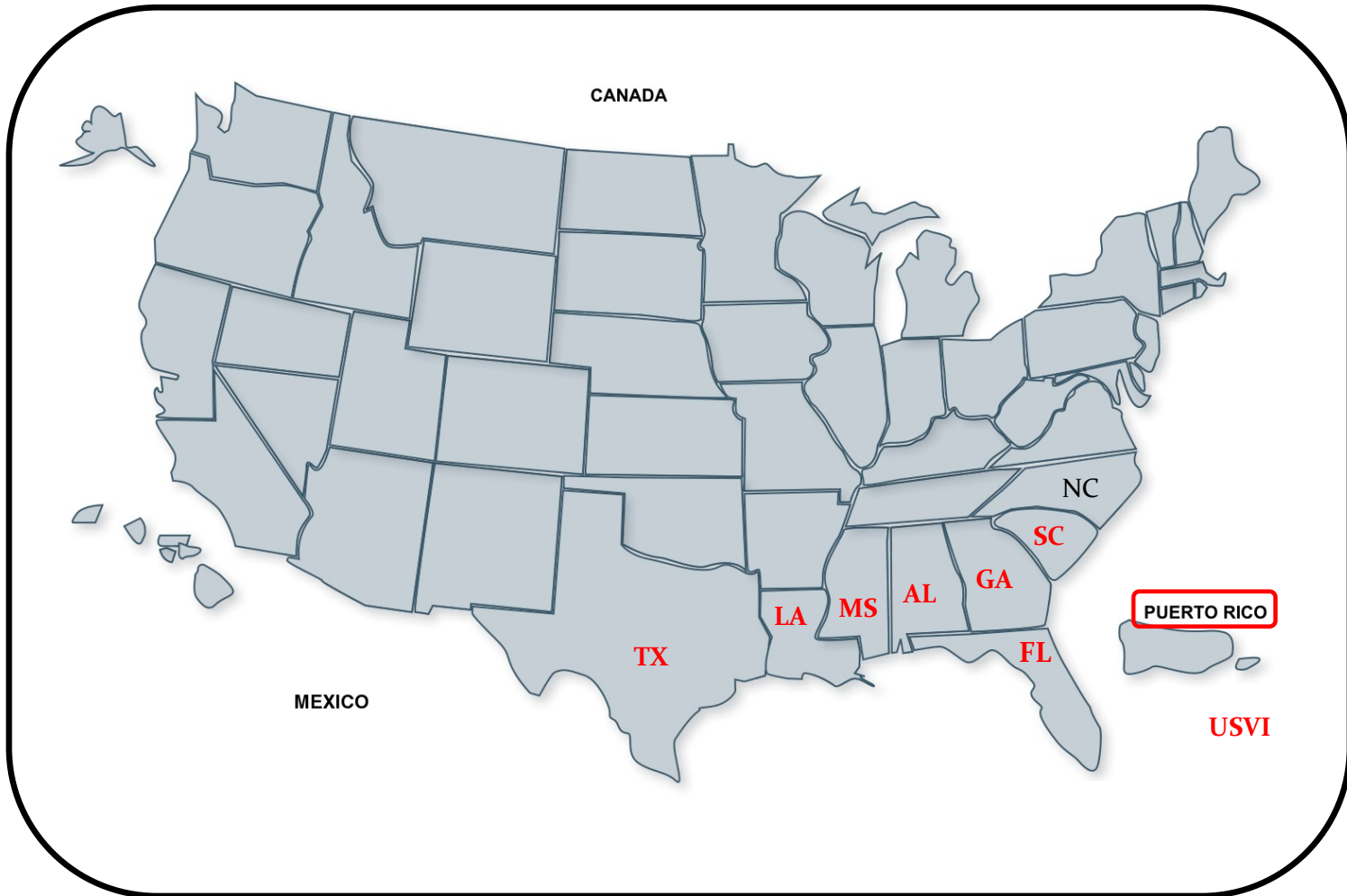
Cooperative Enforcement Program

- Authority
 - Magnuson-Stevens Act (MSA)—Governor of a State may apply for execution of a joint enforcement agreement 16 USC 1861(h)
 - Authorizes certain coastal state and territorial marine conservation law enforcement agencies to enforce Federal laws and regulations in the Exclusive Economic Zone (EEZ)





Nine Active Partners 7 States 2 Territories

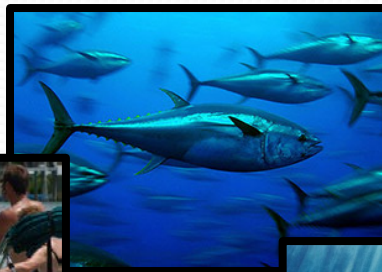


Federal Priorities/Focus Enforcement

- 🇺🇸 Funding allocated annually to the SED JEA to address Federal priorities through patrol, monitoring, and inspection services.

- 🇺🇸 Top Priorities

- 🇺🇸 TED's
- 🇺🇸 IFQ/Red Snapper
- 🇺🇸 HMS
- 🇺🇸 MMPA





NATIONAL MARINE SANCTUARY SYSTEM

Olympic Coast

Greater Farallones

Cordell Bank

Monterey Bay

Papahānaumokuākea

Hawaiian Islands Humpback Whale

Channel Islands

American Samoa (U.S.)

Thunder Bay

Stellwagen Bank

Monitor

Gray's Reef

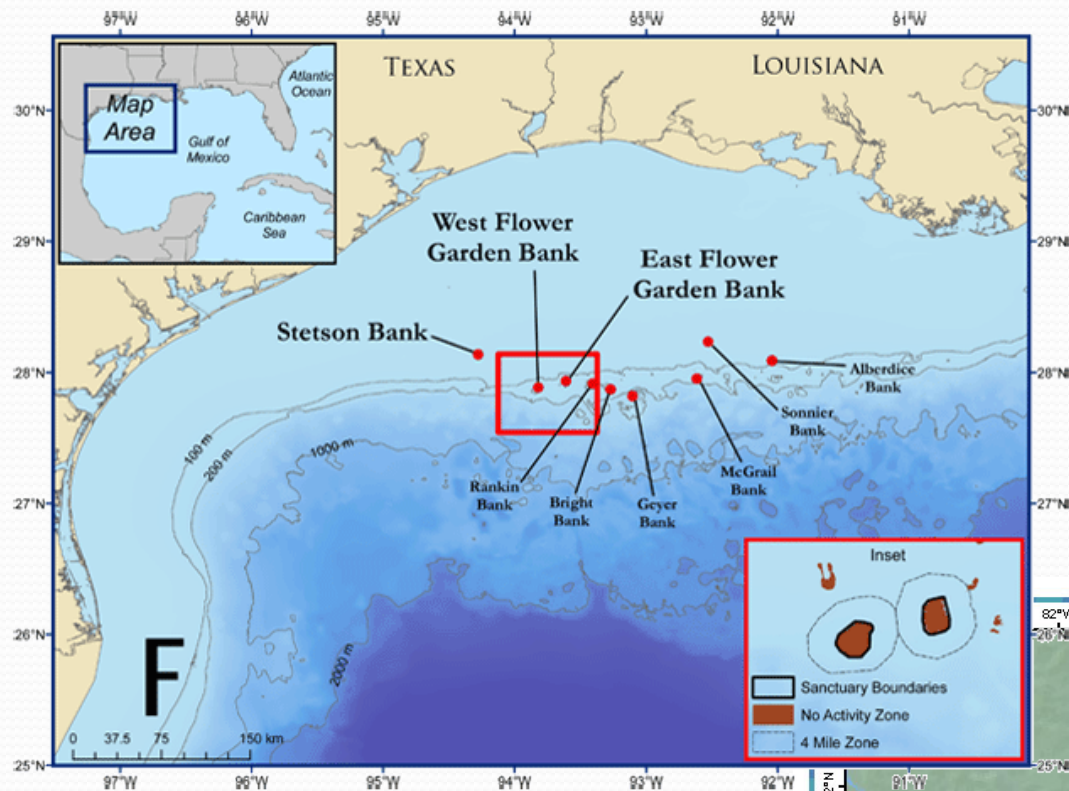
Florida Keys

Flower Garden Banks



Scale varies in this perspective. Adapted from National Geographic Maps.

- National Marine Sanctuary
- ▲ Marine National Monument



TEXAS



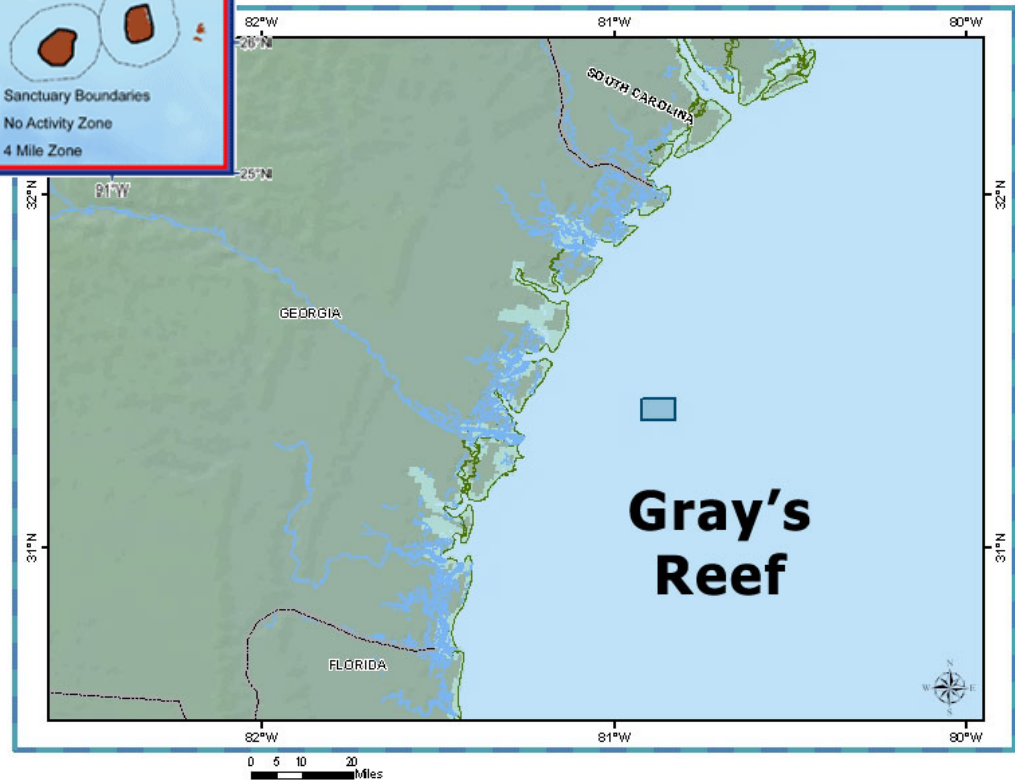
Participated in Pulse Ops Program for the first time being able to patrol the NMS Flower Garden and made over 219 contacts during those patrols.

GEORGIA



Work with other NMFS Programs through JEA:

- Sanctuary: Gray's Reef NMS**
- Protected Resources: Right Whale**

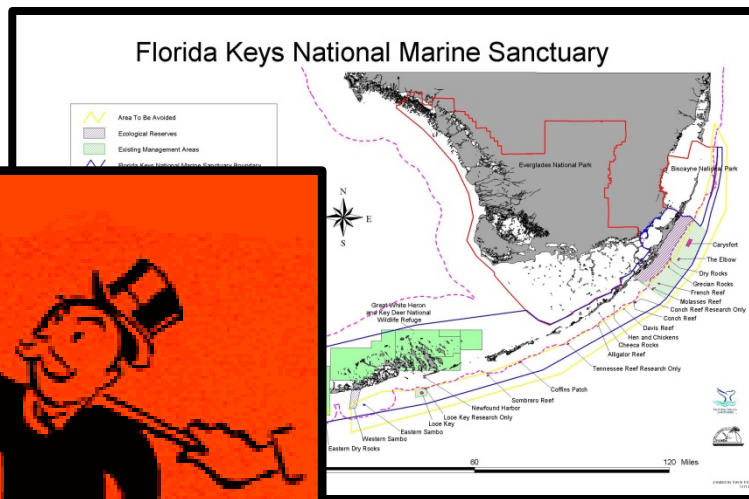
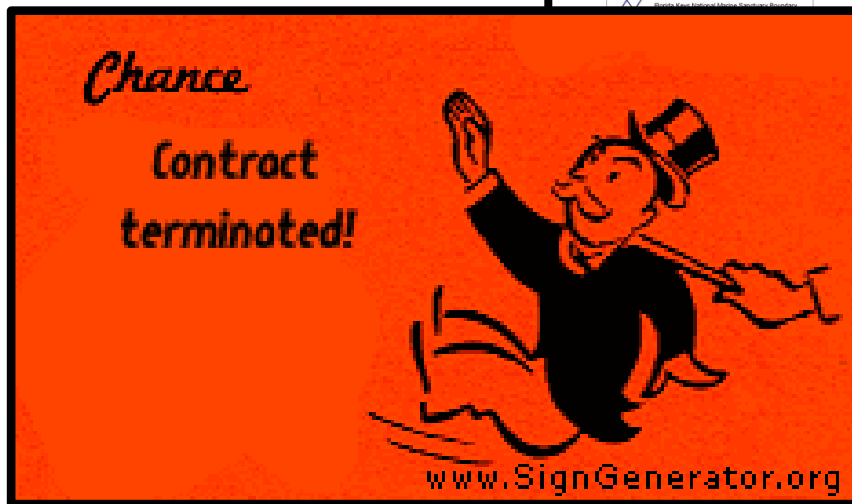




NOAA
FISHERIES

Office of Law Enforcement

In the 2014 funding from NOS was transferred to OLE to incorporate it into the CEP as a separate agreement from the base FL JEA.





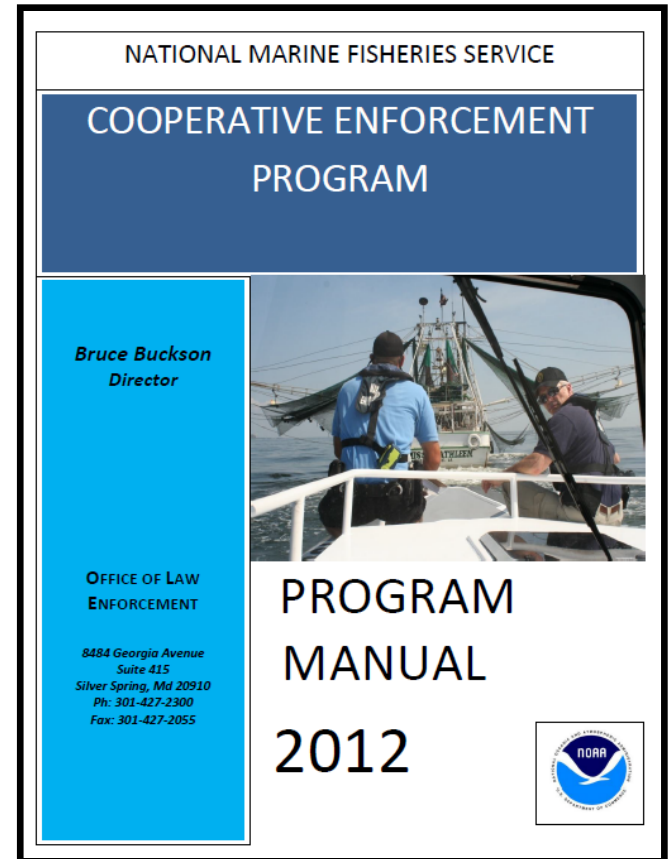
**NOAA
FISHERIES**

Office of Law Enforcement

Funding and priorities were addressed through a JEA.

Structured as a separate JEA for FWC

FKNMS continued to provide enforcement platforms.





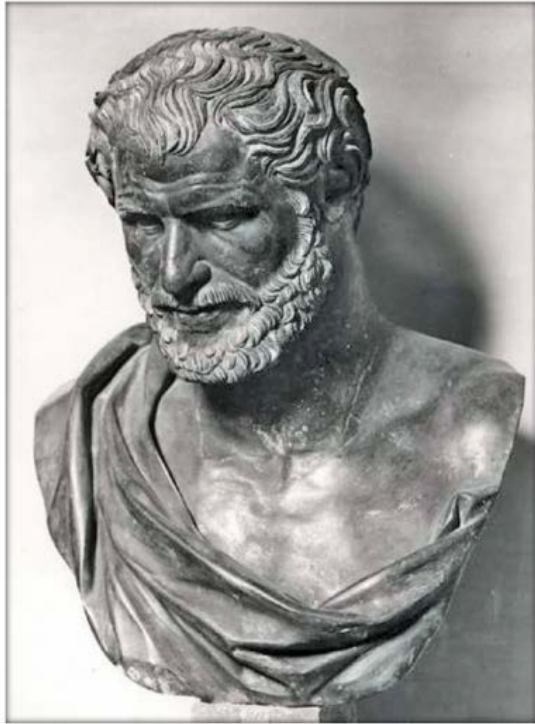
**NOAA
FISHERIES**

Office of Law Enforcement

Recent events, to include funding trends,

**Program at a
crossroads.**





Heraclitus of Ephesus (535/475BC).-

“THERE IS
NOTHING
PERMANENT
EXCEPT
CHANGE”

HERACLITUS



NOAA
FISHERIES

Office of Law Enforcement

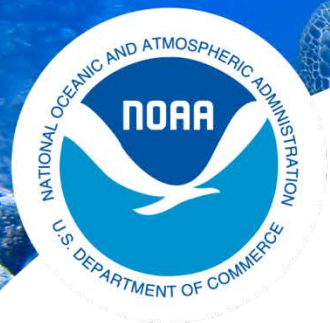
Our dilemma is that we hate change and love it at the same time; what we really want is for things to remain the same - but get better.

Sydney J. Harris



CONFUSION

You're not making any sense at all.



NOAA
FISHERIES

Office of Law Enforcement

WHAT DOES THIS MEAN?





**NOAA
FISHERIES**

Office of Law Enforcement



Merge the separate FKNMS JEA into the existing Florida JEA.

FKNMS will work with OLE to address their priorities based on the funding available.



**NOAA
FISHERIES**

Office of Law Enforcement



Program pays for hours of service (not individuals)

FWC will utilize state assets on a reimbursable basis as with all other JEAs

Program will be based on over-time, (offices benefit from participation)



**NOAA
FISHERIES**

Office of Law Enforcement

NOAA ENFORCEMENT OFFICERS



- Able to provide compliance assistance and training
- Work closely with state partners to ensure they were conducting proper inspections, thus increasing quality data points.



NOAA
FISHERIES

Office of Law Enforcement

Future success will require flexibility

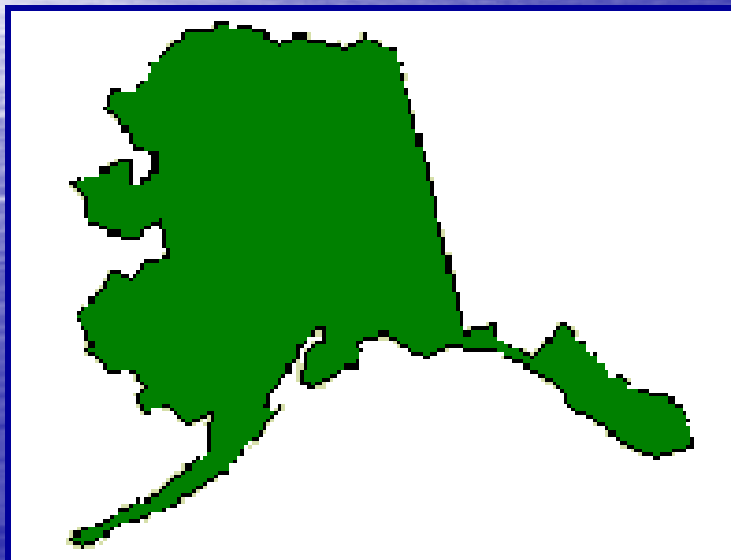


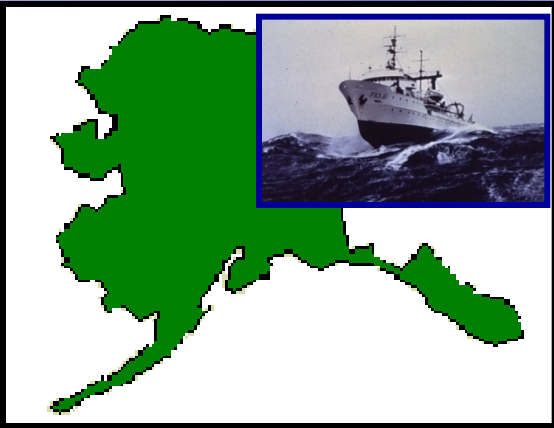
Questions











KEY WEST, FL

OFFICE OF LAW ENFORCEMENT

